



Johnson School of Business

Neighborhood Health Clinic Needs Assessment
Collier County Community Profile

June 1, 2016

Neighborhood Health Clinic
Collier County Community Profile 2016

Copyright © 2016 by Johnson School of Business, Hodges University.
All rights reserved, including the right of reproduction in whole or in part in any form.

Neighborhood Health Clinic Collier County Community Profile 2016

This report was compiled by the Johnson School of Business Hodges University, Naples,
Florida.

Contact Information

Anke Stugk, MBA, astugk@hodges.edu

Eve Olvera, AS, eolvera@hodges.edu

Dr. Aysegul Timur, atimur@hodges.edu



Neighborhood Health Clinic Collier County Community Profile 2016

About Hodges University

Founded in 1990, Hodges University is a private, nonprofit and one of Florida's leading institutions of higher learning. With campuses located in Naples and Fort Myers, the university uses its local roots and global reach to provide transformational, learner-driven educational opportunities for its students.

In addition to offering associate, baccalaureate and graduate degrees in a variety of disciplines and delivery options, Hodges University enhances the ability of students to achieve personal and professional objectives through diverse educational experiences and programs including English as a Second Language and the Center for Lifelong Learning.

For more information, call (239) 513-1122 or visit Hodges.edu.



Neighborhood Health Clinic
Collier County Community Profile 2016

Neighborhood Health Clinic Collier County Community Profile 2016

Introduction

This community profile is prepared in support of the Neighborhood Health Clinic, a nonprofit clinic located in Naples, Florida, in Collier County. The clinic serves employed, uninsured individuals in Collier County.

Purpose, Scope, and Limitations

The purpose of this report is to create a community profile for Collier County to better assess the demand for services provided by the Neighborhood Health Clinic. The report focuses as narrowly as possible on a study of the trends among the clinic's target population; namely, employed, uninsured residents in Collier County, age 19–64, living at 200 percent or below the federal poverty line.

Statistics for Collier County will be compared to state and national data. In addition, Lee County, Orange County, Palm Beach County and Sarasota County were chosen for direct comparison since these counties have somewhat similar demographic and economic indicators to those of Collier County (Hodges University, 2012).

Although this research team was able to retrieve relevant, reliable data, there were a few limitations. Those limitations are as follows:

- 1) Data for the 19–64 age group was not available from the U.S. Census Bureau. Instead, we used data for individuals of age 18–64 as a proxy.
- 2) Certain data was not available for individuals earning less than 200 percent of the federal poverty level. Instead, we used data for individuals below poverty level as a proxy.
- 3) Certain tables presented in this report include data on individuals who match all of the clinic's eligibility requirements, except that the individuals are not necessarily deriving their income from active employment. For example, sources of income may include, but are not limited to social security and interest, dividends, or net rental income.
- 4) In some cases, our target population is a subset of another larger population for which data was available. For example, health insurance coverage information for all employed individuals, 18–64 years, of which some individuals living below 200 percent of the federal poverty level are a subset. Here, as elsewhere where the need arose, the simplifying assumption was made that a change in the population will necessarily lead to a similar change in a subset of that population.

Neighborhood Health Clinic Collier County Community Profile 2016

Sources and Methods

We conducted the majority of the analysis using data files from the American Community Survey provided by the U.S. Census Bureau. Where necessary, the research team performed additional calculations on the table data.

Report Organization

The report has focus on Collier County, first providing a demographic overview, then examining poverty by age, sex and employment, and finally, adding health insurance coverage status. The report then provides an overview of chronic diseases by category occurrence. All census data variables were compared directly to state and U.S. data, as well as to four other Florida counties, Lee County, Orange County, Palm Beach County and Sarasota County. Due to data availability, chronic disease data was not compared to the national level.

Neighborhood Health Clinic Collier County Community Profile 2016

TABLE OF CONTENTS

About Hodges University	3
List of Tables	9
List of Figures	10
Executive Summary.....	11
Demographic Overview	13
Poverty by Age Group	14
Poverty by Employment Status by Sex	17
Poverty by Sex.....	19
Individuals Below 200 Percent of Poverty Level.....	21
Employment, Poverty and Health Insurance Coverage	26
Chronic Diseases	31
Cardiovascular Diseases.....	34
Respiratory Diseases	39
Diabetes	43
HIV/AIDS.....	45
Appendix A.....	49

Neighborhood Health Clinic Collier County Community Profile 2016

List of Tables

Table 1 Total Population by Age Group.....	13
Table 2 Percent of Individuals Below Poverty Level by Age Group.....	14
Table 3 Employed Below Poverty Level by Sex	17
Table 4 Poverty by Sex for Individuals 18-64	19
Table 5 All Individuals Below 200 Percent Poverty Level.....	21
Table 6 Health Insurance Coverage Status for Employed Individuals, 18-64 Years.....	26
Table 7 Individuals of Age 18-64 with Income Below 200 Percent Poverty Level without Private Health Insurance	29
Table 8 County Death Data Comparison 2014	31
Table 9 Alzheimer Disease Death Rate	32
Table 10 All Cancers, Crude Death Rate.....	33
Table 11 Adults Who Have Ever Been Told They Had Hypertension	34
Table 12 Adults with Hypertension Who Currently Take High Blood Pressure Medicine	34
Table 13 Hypertension Crude Death Rate	36
Table 14 Major Cardiovascular Diseases Crude Death Rate.....	38
Table 15 Asthma Crude Death Rate	39
Table 16 Chronic Lower Respiratory Disease	40
Table 17 Influenza and Pneumonia Crude Death Rate	41
Table 18 Diabetes – Crude Death Rate.....	43
Table 19 Preventable Hospitalizations Under 65 from Diabetes	44
Table 20 HIV/AIDS- Age-Adjusted Death Rate	45
Table 21 Adults Less Than 65 Years of Age Who Have Ever Been Tested for HIV	45
Table 22 HIV Infection Cases, 3-Year Rolling Rates.....	46
Table 23 Poverty Thresholds for 2005.....	49
Table 24 Poverty Thresholds for 2006.....	50
Table 25 Poverty Thresholds for 2007.....	51
Table 26Poverty Thresholds for 2008.....	52
Table 27 Poverty Thresholds for 2009.....	53
Table 28 Poverty Thresholds for 2010.....	54
Table 29 Poverty Thresholds for 2011.....	55
Table 30 Poverty Thresholds for 2012.....	56
Table 31 Poverty Thresholds for 2013.....	57
Table 32 Poverty Thresholds for 2014.....	58
Table 33 Poverty Thresholds for 2015.....	59

Neighborhood Health Clinic Collier County Community Profile 2016

List of Figures

Figure 1 Collier County Individuals below Poverty as Percent of Age Group.....	15
Figure 2 2014 – Percent of Age Group Below Poverty Level by Region.....	16
Figure 3 Collier County Individuals Employed Below Poverty by Sex	18
Figure 4 Collier County Poverty and Unemployment Rate	20
Figure 5 Collier County Individuals Below 200 Percent Poverty Level – By Poverty Levels.....	23
Figure 6 Percentage Change - Population Below 50 Percent Poverty Level.....	24
Figure 7 Percentage Change - Population Below 200 Percent Below Poverty Level.....	25
Figure 8 Percentage of Employed Individuals with No Health Insurance (18-64 Years).....	27
Figure 9 Collier County Employed Individuals by Health Insurance Coverage (18-64 Years)	28
Figure 10 Individuals of Age 18-64 with Income Below 200 Percent Poverty Level without Private Health Insurance	30
Figure 11 Adults Who Have Ever Been Told They Had Hypertension.....	35
Figure 12 Adults with Hypertension Who Currently Take High Blood Pressure Medicine.....	35
Figure 13 Collier County Hypertension - Crude Death Rate.....	37
Figure 14 2013 Adults Who Have Ever Been Told They Had COPD, Emphysema or Chronic Bronchitis	39
Figure 15 Respiratory Diseases - Crude Death Rates	42
Figure 16 Collier County – Death Rates by Chronic Disease.....	47
Figure 17 Collier County Cancer and Major Cardiovascular- Death Rates.....	48

Neighborhood Health Clinic Collier County Community Profile 2016

Executive Summary

This study brought together information that is relevant to the Neighborhood Health Clinic, which serves employed, but uninsured, individuals in Collier County, who are age 19 to 64, and who live at or below 200 percent of the federal poverty level (see Appendix). Data presented in this report provides a detailed insight of Collier County's population in terms of poverty, health insurance and chronic diseases. For comparison purposes, the data is provided at the national and state level, as well as for Collier County, Lee County, Orange County, Palm Beach County and Sarasota County for the years 2011 to 2014.

Overall, the target population by age group in Collier County has increased from 2011 to 2014. In Collier County, the age groups 18 to 24 years and 25 to 34 years have the highest percentage in poverty with 18.8 percent and 18 percent respectively. These two age groups also have the highest percentage of individuals in poverty in all other compared geographical areas. Furthermore, from 2012 to 2014, Collier County has experienced an increase of employed individuals in poverty with an increase of 23.65 percent from 2012 to 2013, and 12.80 percent from 2013 to 2014. Comparing this information in Table 3, it is clear that Collier County has a higher percentage increase of individuals in relation to most other geographical areas included in this report. Additionally, in Figure 4 it is shown that while unemployment rates in Collier County are declining, the poverty rate is increasing. From 2013 to 2014, Collier County experienced a 14 percent increase of individuals below 50 percent poverty level and 16 percent increase of individuals below 125 percent poverty level. Nationally, these two groups experienced a decline.

In Collier County, the percentage of employed individuals without health insurance coverage has annually declined to 31 percent in 2014 from the peak of 35 percent in 2012. However, the number of individuals employed without health insurance increased from 40,077 in 2013 to 40,560 in 2014. The percentage of individuals 18 to 64 with income below the 200 percent poverty level declined from 79 percent in 2011 to 69 percent in 2014. Nonetheless, it remains above the national level of 62 percent in 2014.

Chronic diseases for the target group are reported to be below the compared geographical areas. Alzheimer death rate for the age group 18 to 64 is 0.4 percent, which is equal to the state rate. Cancer death rate in Collier County is 80.8 percent, which is below the state cancer death rate of 98.8 percent. The percentage of individual's between the ages of 45 to 64 being told they had hypertension has increased to 38 percent in 2014. The percentage of individuals with hypertension taking medication also increased to 81 percent, which is one percent above state level. While the hypertension death rate for individuals 45 to 65 increased from 1.6 in 2006-08 to 3 in 2012-14, it remains below the state crude hypertension death rate of 6.6. Respiratory diseases and respiratory diseases crude death rates have declined in Collier County and remain below state rates.

Neighborhood Health Clinic Collier County Community Profile 2016

It must be noted, that the crude death rate from diabetes and the rate of preventable hospitalizations from diabetes for individuals below 65 has slightly increased in the most recent years.

In Florida, the HIV/AIDS death rate declined to 4.4, with Collier County having the lowest HIV/AIDS death rate of 1.3. Also the rate of HIV cases has been declining to a rate of 10.4 compared to the state HIV infection rate of 23.4. Further, it is notable that the percentage of population below 65 years who ever had been tested for HIV has increased to 55 percent in Collier County, compared to 51 percent in the state of Florida

Neighborhood Health Clinic Collier County Community Profile 2016

Demographic Overview

Table 1 Total Population by Age Group

Region/Year	Total population				
	18 to 24 years	25 to 34 years	35 to 44 years	45 to 54 years	55 to 64 years
United States					
2010	30,895,391	40,972,083	41,192,328	44,929,033	36,761,964
2011	31,209,548	41,540,346	40,827,710	44,653,387	38,065,201
2012	31,472,132	42,100,846	40,698,086	44,204,952	38,587,137
2013	31,631,612	42,626,555	40,608,235	43,674,983	39,336,852
2014	31,554,009	43,323,099	40,751,359	43,353,277	40,082,996
Florida					
2010	1,766,628	2,270,950	2,437,991	2,739,968	2,355,071
2011	1,795,011	2,328,282	2,408,924	2,739,211	2,431,769
2012	1,812,848	2,381,017	1,216,168	2,739,867	2,465,232
2013	1,797,134	2,435,386	2,409,505	2,726,761	2,511,061
2014	1,798,078	2,512,629	2,432,609	2,730,745	2,574,259
Collier County					
2010	22,959	31,689	36,640	39,917	42,990
2011	24,372	31,570	34,607	41,512	43,977
2012	23,499	33,457	34,091	41,096	43,428
2013	23,489	34,212	35,029	41,574	44,877
2014	25,307	33,815	35,506	42,402	45,707
Lee County					
2010	46,988	66,073	70,161	82,180	87,588
2011	48,803	67,025	68,931	81,414	89,441
2012	49,298	67,564	71,378	82,499	90,023
2013	48,980	70,592	71,486	82,570	93,020
2014	50,969	71,570	55,390	83,617	95,437
Orange County					
2010	147,362	177,846	164,463	163,043	115,365
2011	146,279	183,246	165,928	163,589	120,745
2012	148,456	191,071	169,293	125,233	125,958
2013	145,634	198,531	172,178	169,121	130,784
2014	144,701	204,941	175,876	171,966	135,758
Palm Beach					
2010	105,566	146,982	165,445	188,443	161,541
2011	107,312	148,221	163,175	188,784	166,072
2012	111,008	153,752	161,970	189,343	167,899
2013	112,022	156,603	162,331	190,122	172,117
2014	112,003	163,583	163,181	191,740	177,156
Sarasota					
2010	22,621	31,424	37,797	51,156	59,213
2011	23,204	30,576	37,950	50,327	58,509
2012	23,272	31,937	36,783	50,304	58,774
2013	25,072	30,637	36,292	49,334	59,076
2014	24,331	31,565	28,709	49,969	60,629

U.S. Census Bureau, American Community Survey. (2008–2014). *B01001: Sex by age* [Data file]. Retrieved from <http://factfinder.census.gov/>

Neighborhood Health Clinic Collier County Community Profile 2016

Poverty by Age Group

Table 2 Percent of Individuals Below Poverty Level by Age Group

Region/Year	Percent of total in poverty for each age group				
	18 to 24 years	25 to 34 years	35 to 44 years	45 to 54 years	55 to 64 years
United States					
2010	23.0%	15.6%	12.4%	10.5%	9.7%
2011	23.6%	16.0%	13.1%	11.4%	10.2%
2012	23.1%	16.0%	13.1%	11.3%	10.6%
2013	22.8%	15.9%	13.3%	11.4%	10.8%
2014	22.3%	15.4%	13.0%	11.2%	11.0%
Florida					
2010	23.5%	17.5%	14.5%	12.8%	12.3%
2011	24.0%	17.0%	15.3%	13.6%	12.3%
2012	24.0%	17.7%	28.6%	13.2%	13.1%
2013	22.8%	17.2%	15.3%	13.6%	13.3%
2014	22.5%	16.3%	14.6%	13.0%	13.6%
Collier County					
2010	29.5%	18.8%	18.9%	11.9%	11.2%
2011	21.4%	15.7%	18.7%	12.8%	12.0%
2012	16.0%	18.0%	15.2%	12.5%	9.5%
2013	13.8%	12.9%	17.0%	11.8%	8.3%
2014	18.8%	18.0%	16.8%	11.7%	9.9%
Lee County					
2010	24.3%	23.8%	16.2%	15.3%	11.8%
2011	17.9%	16.1%	18.3%	13.2%	12.3%
2012	20.6%	19.0%	18.1%	12.4%	10.2%
2013	21.5%	18.7%	21.1%	15.3%	11.4%
2014	21.6%	18.0%	24.4%	14.4%	12.6%
Orange County					
2010	24.8%	15.0%	12.4%	11.1%	10.7%
2011	27.3%	15.6%	15.1%	13.3%	12.0%
2012	24.1%	17.0%	12.9%	16.5%	9.0%
2013	24.0%	16.7%	13.9%	13.1%	13.5%
2014	24.5%	16.1%	14.5%	15.4%	12.4%
Palm Beach					
2010	20.0%	15.2%	13.1%	11.4%	10.3%
2011	21.2%	20.4%	14.5%	10.8%	11.7%
2012	17.2%	18.3%	12.1%	11.1%	11.3%
2013	20.6%	18.2%	12.9%	10.7%	12.1%
2014	20.7%	15.7%	13.4%	11.4%	13.1%
Sarasota					
2010	27.5%	16.1%	13.9%	13.9%	11.8%
2011	19.8%	12.6%	11.2%	12.7%	9.1%
2012	16.8%	14.5%	10.7%	13.3%	12.5%
2013	26.4%	13.8%	14.6%	13.6%	11.7%
2014	13.9%	18.8%	12.9%	8.8%	8.7%

Sources: U.S. Census Bureau, American Community Survey. (2008–2014). *B17001: Poverty status in the past 12 months by sex by age* [Data file]. Retrieved from <http://factfinder.census.gov/>; U.S. Census Bureau, American Community Survey. (2008–2014). *B01001: Sex by age* [Data file]. Retrieved from <http://factfinder.census.gov/>

Note: Percentages were calculated by research team.

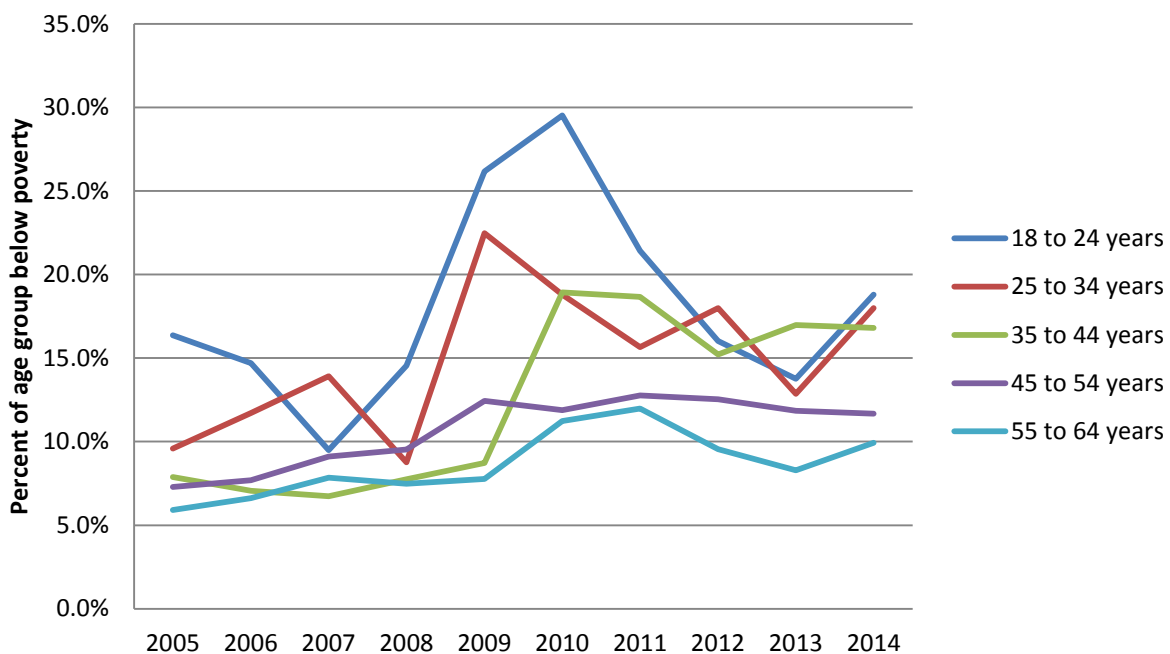
Neighborhood Health Clinic Collier County Community Profile 2016

Table 2 shows individuals below poverty level as a percentage by age group for 2010 to 2014. The largest change was reported for the age group 35 to 44 years in Florida with a decline from 28.6 percent in 2012 to 14.6 percent in 2014 of individuals below poverty level.

From 2013 to 2014, the percentage of individuals below poverty level in the age groups 18 to 24 years and 25 to 34 years in Collier County increased by approximately five percent.

Figure 1 Collier County Individuals below Poverty as Percent of Age Group

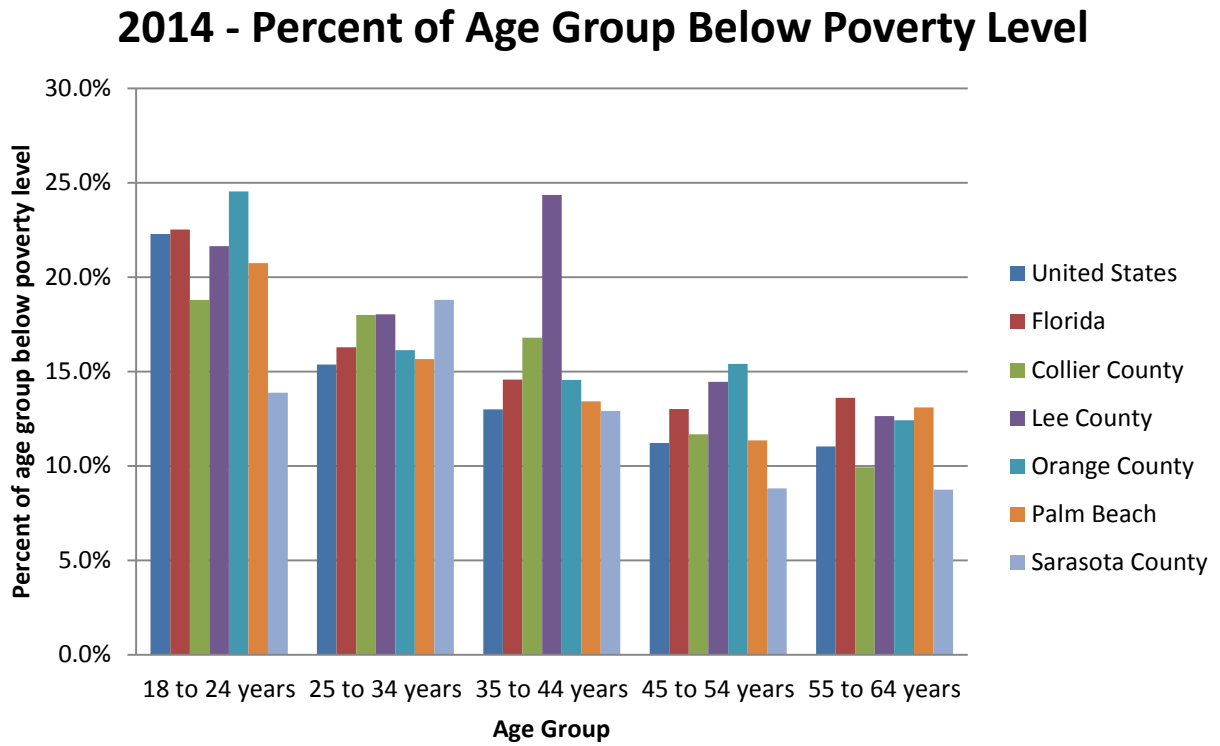
Collier County Individuals Below Poverty Level



Sources: U.S. Census Bureau, American Community Survey. (2005–2014). *B17001: Poverty status in the past 12 months by sex by age* [Data file]. Retrieved from <http://factfinder.census.gov/>; U.S. Census Bureau, American Community Survey. (2005–2014). *B01001: Sex by age* [Data file]. Retrieved from <http://factfinder.census.gov/>

Neighborhood Health Clinic Collier County Community Profile 2016

Figure 2 2014 – Percent of Age Group Below Poverty Level by Region



Sources: U.S. Census Bureau, American Community Survey. (2014). *B17001: Poverty status in the past 12 months by sex by age* [Data file]. Retrieved from <http://factfinder.census.gov/>; U.S. Census Bureau, American Community Survey. (2014). *B01001: Sex by age* [Data file]. Retrieved from <http://factfinder.census.gov/>

Neighborhood Health Clinic Collier County Community Profile 2016

Poverty by Employment Status by Sex

Table 3 Employed Below Poverty Level by Sex

Region/Sex	2011	2012	%change from previous year	2013	%change from previous year	2014	%change from previous year
United States							
Male	4,743,111	4,809,449	1.40%	4,948,486	2.89%	5,007,735	1.20%
Female	5,564,780	5,742,964	3.20%	5,924,357	3.16%	6,058,649	2.27%
Both	10,307,891	10,552,413	2.37%	10,872,843	3.04%	11,066,384	1.78%
Florida							
Male	305,118	313,112	2.62%	327,455	4.58%	328,290	0.25%
Female	344,135	357,247	3.81%	364,739	2.10%	382,985	5.00%
Both	649,253	670,359	3.25%	692,194	3.26%	711,275	2.76%
Collier County							
Male	7,789	5,108	-34.42%	6,016	17.78%	7,149	18.83%
Female	4,539	4,300	-5.27%	5,617	30.63%	5,973	6.34%
Both	12,328	9,408	-23.69%	11,633	23.65%	13,122	12.80%
Lee County							
Male	9,217	10,363	12.43%	9,761	-5.81%	10,874	11.40%
Female	8,831	12,718	44.02%	12,192	-4.14%	15,234	24.95%
Both	18,048	23,081	27.89%	21,953	-4.89%	26,108	18.93%
Orange County							
Male	28,384	20,620	-27.35%	26,133	26.74%	30,301	15.95%
Female	27,490	29,688	8.00%	28,932	-2.55%	30,016	3.75%
Both	55,874	50,308	-9.96%	55,065	9.46%	60,317	9.54%
Palm Beach							
Male	21,982	21,117	-3.94%	21,758	3.04%	25,651	17.89%
Female	21,748	23,553	8.30%	27,273	15.79%	26,281	-3.64%
Both	43,730	44,670	2.15%	49,031	9.76%	51,932	5.92%
Sarasota							
Male	4,181	3,642	-12.89%	6,339	74.05%	4,809	-24.14%
Female	4,289	6,589	53.63%	3,940	-40.20%	5,610	42.39%
Both	8,470	10,231	20.79%	10,279	0.47%	10,419	1.36%

Source: U.S. Census Bureau, American Community Survey. (2011-2014). *S1701: Poverty status in the past 12 months* [Data file]. Retrieved from <http://factfinder.census.gov>

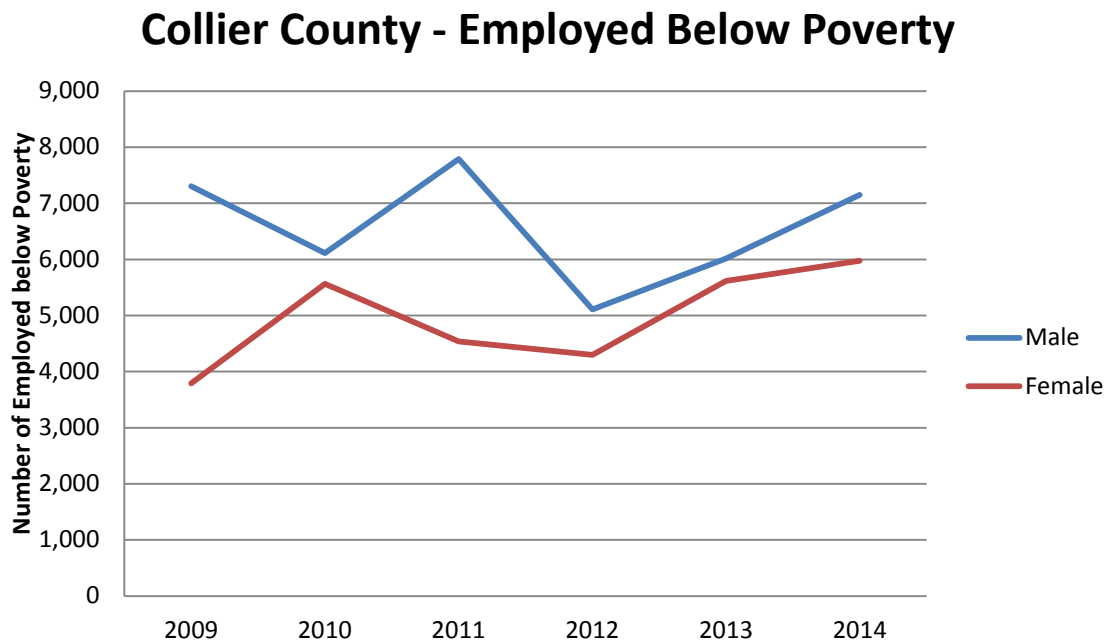
Note: Year-to-year percentage changes were calculated by research team.

Neighborhood Health Clinic Collier County Community Profile 2016

The table above shows the number of employed individuals living below poverty. From 2011 to 2014, the total number of employed individuals below poverty level increased for all reported regions.

The number of employed individuals below poverty level in Collier County decreased by 23.69 percent from 2011 to 2012, but increased by 23.65 percent from 2012 to 2013, and by 12.80 percent from 2013 to 2014. It is also noteworthy that the percentage change of individuals employed living below poverty level differentiates by sex. While the male percentage decreased by 34.42 percent from 2011 to 2012, females had a 5.27 percentage decrease over the same period of time. From 2012 to 2013 the male population had a 17.78 percentage increase of employed individuals below poverty level, and the female population had a 30.63 percent percentage increase. However, the percentage increase of employed individuals living below poverty was higher for the male (18.83%) than female population (6.34%). This observation is shown in Figure 3.

Figure 3 Collier County Individuals Employed Below Poverty by Sex



Source: U.S. Census Bureau, American Community Survey. (2019-2014). *S1701: Poverty status in the past 12 months* [Data file]. Retrieved from <http://factfinder.census.gov>

Neighborhood Health Clinic Collier County Community Profile 2016

Poverty by Sex

Table 4 Poverty by Sex for Individuals 18-64

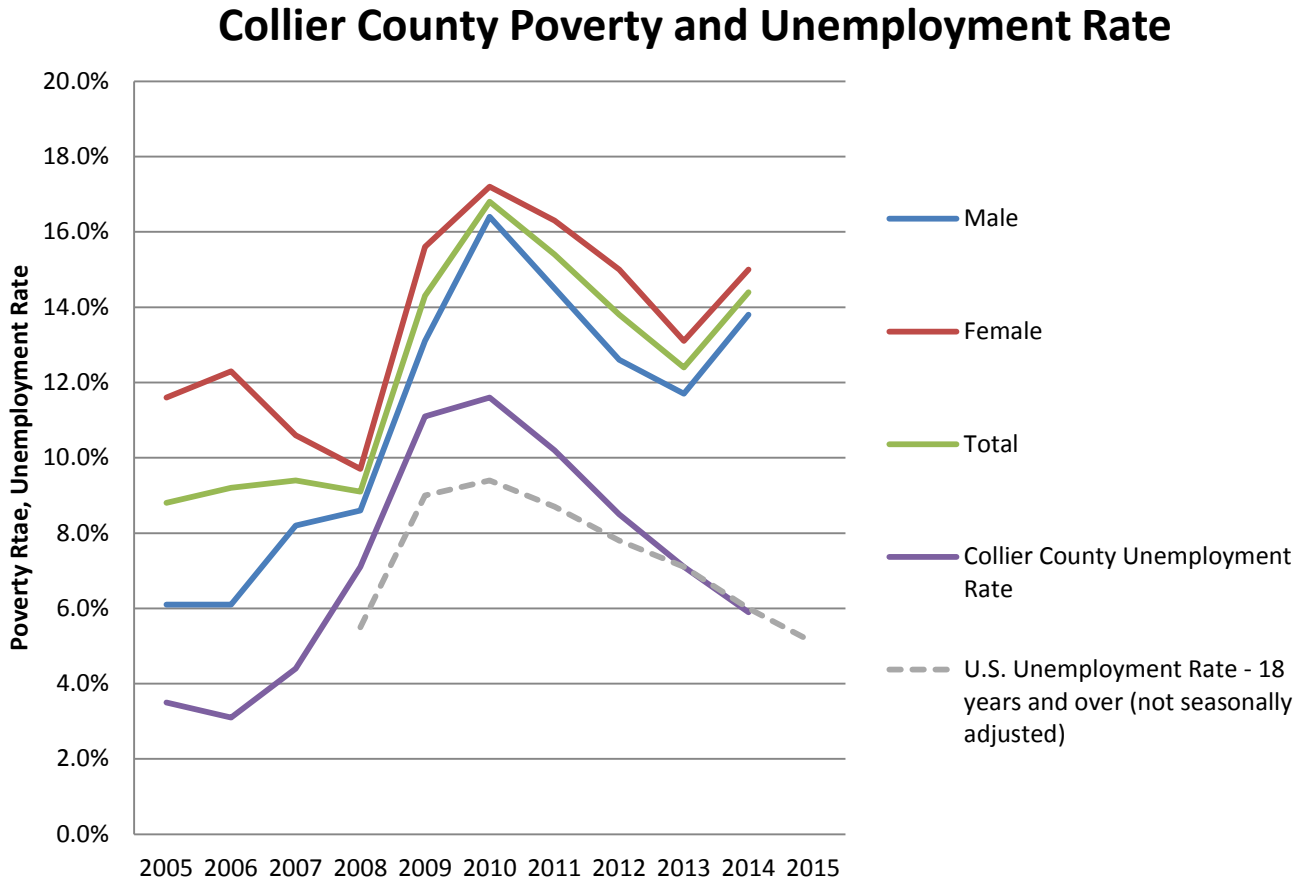
Region/Sex	Percent of total for age group						
	2008	2009	2010	2011	2012	2013	2014
<i>United States</i>							
Male	9.7%	11.0%	12.1%	12.6%	12.5%	12.5%	12.3%
Female	13.4%	14.5%	15.6%	16.3%	16.3%	16.3%	16.1%
Total	11.6%	12.8%	13.8%	14.4%	14.4%	14.4%	14.2%
<i>Florida</i>							
Male	10.4%	12.2%	14.3%	14.5%	14.2%	14.4%	13.9%
Female	13.4%	15.1%	16.8%	17.3%	17.7%	17.6%	17.2%
Total	11.9%	13.6%	15.6%	15.9%	16.0%	16.0%	15.5%
<i>Collier County</i>							
Male	8.6%	13.1%	16.4%	14.5%	12.6%	11.7%	13.8%
Female	9.7%	15.6%	17.2%	16.3%	15.0%	13.1%	15.0%
Total	9.1%	14.3%	16.8%	15.4%	13.8%	12.4%	14.4%
<i>Lee County</i>							
Male	8.6%	12.8%	14.9%	14.9%	13.7%	15.3%	14.6%
Female	11.0%	13.4%	19.8%	15.4%	16.9%	18.4%	18.2%
Total	9.8%	13.1%	17.4%	15.2%	15.3%	16.9%	16.5%
<i>Orange County</i>							
Male	12.1%	12.3%	13.8%	16.0%	12.7%	14.4%	15.2%
Female	13.0%	13.6%	15.9%	17.3%	17.7%	17.9%	17.7%
Total	12.6%	13.0%	14.9%	16.6%	15.2%	16.2%	16.5%
<i>Palm Beach</i>							
Male	9.7%	13.3%	12.2%	14.1%	12.2%	12.3%	12.9%
Female	12.9%	14.3%	14.6%	16.0%	15.0%	16.3%	15.7%
Total	11.3%	13.8%	13.4%	15.0%	13.6%	14.3%	14.3%
<i>Sarasota</i>							
Male	8.1%	11.9%	14.5%	12.3%	12.1%	14.9%	10.4%
Female	10.5%	14.7%	15.7%	12.0%	14.2%	14.8%	11.9%
Total	9.3%	13.3%	15.2%	12.2%	13.2%	14.9%	11.2%

Source: U.S. Census Bureau, American Community Survey. (2008–2011). *B17001: Poverty status in the past 12 months by sex by age* [Data file]. Retrieved from <http://factfinder.census.gov/>; U.S. Census Bureau, American Community Survey. (2008–2014). *B01001: Sex by age* [Data file]. Retrieved from <http://factfinder.census.gov/>

Table 4 above shows the percentage of individuals below poverty level by gender for 2008 to 2014. The percentage of individuals between 18 and 64 years of age in poverty remains above the 2008 reported data. While the percentage is minimally declining at the national and state level, in Collier County this percentage increased from 12.4 percent in 2013 to 14.4 percent in 2014.

Neighborhood Health Clinic Collier County Community Profile 2016

Figure 4 Collier County Poverty and Unemployment Rate



Sources: U.S. Census Bureau, American Community Survey. (2005–2014). *B17001: Poverty status in the past 12 months by sex by age* [Data file]. Retrieved from <http://factfinder.census.gov/>; U.S. Census Bureau, American Community Survey. (2005–2014). *B01001: Sex by age* [Data file]. Retrieved from <http://factfinder.census.gov/>; Florida Department of Economic Opportunity, 2005-2014 Local area unemployment statistics (LAUS) [Data File]. Retrieved from <http://www.floridajobs.org>. Bureau of Labor Statistics (2015), Unemployment rate 18 years and over, 2008-2015, LNU04076975 [Data File]. Retrieved from www.bls.gov

Neighborhood Health Clinic Collier County Community Profile 2016

Individuals Below 200 Percent of Poverty Level

Table 5 All Individuals Below 200 Percent Poverty Level

Region	2011	2012	% change from previous year	2013	% change from previous year	2014	% change from previous year
<i>United States</i>							
<i>below 50 percent</i>	21,459,639	21,535,923	0.36%	21,693,347	0.73%	21,244,778	-2.07%
<i>below 125 percent</i>	63,324,455	63,569,291	0.39%	63,558,165	-0.02%	63,010,024	-0.86%
<i>below 150 percent</i>	78,288,180	78,708,572	0.54%	78,433,011	-0.35%	77,820,356	-0.78%
<i>below 185 percent</i>	98,700,855	99,174,021	0.48%	98,795,566	-0.38%	98,183,260	-0.62%
<i>below 200 percent</i>	106,826,236	107,466,789	0.60%	107,159,938	-0.29%	106,565,531	-0.55%
<i>Florida</i>							
<i>below 50 percent</i>	1,403,086	1,418,025	1.06%	1,458,753	2.87%	1,396,477	-4.27%
<i>below 125 percent</i>	4,213,033	4,288,362	1.79%	4,255,916	-0.76%	4,264,883	0.21%
<i>below 150 percent</i>	5,258,563	5,383,354	2.37%	5,307,439	-1.41%	5,351,243	0.83%
<i>below 185 percent</i>	6,694,807	6,843,211	2.22%	6,752,658	-1.32%	6,803,140	0.75%
<i>below 200 percent</i>	7,242,203	7,401,062	2.19%	7,333,279	-0.92%	7,384,220	0.69%
<i>Collier County</i>							
<i>below 50 percent</i>	26,885	18,308	-31.90%	16,862	-7.90%	19,226	14.02%
<i>below 125 percent</i>	71,932	63,793	-11.31%	57,298	-10.18%	66,580	16.20%
<i>below 150 percent</i>	98,353	86,452	-12.10%	75,879	-12.23%	80,150	5.63%
<i>below 185 percent</i>	126,349	114,215	-9.60%	98,719	-13.57%	102,648	3.98%
<i>below 200 percent</i>	132,628	121,508	-8.38%	109,219	-10.11%	115,065	5.35%
<i>Lee County</i>							
<i>below 50 percent</i>	43,278	47,030	8.67%	54,946	16.83%	41,257	-24.91%
<i>below 125 percent</i>	139,528	127,175	-8.85%	143,718	13.01%	145,756	1.42%
<i>below 150 percent</i>	170,570	171,073	0.29%	171,794	0.42%	177,823	3.51%
<i>below 185 percent</i>	210,235	224,849	6.95%	226,739	0.84%	227,278	0.24%
<i>below 200 percent</i>	233,110	245,929	5.50%	247,321	0.57%	251,039	1.50%
<i>Orange County</i>							
<i>below 50 percent</i>	83,483	87,691	5.04%	91,536	4.38%	93,541	2.19%
<i>below 125 percent</i>	278,479	283,427	1.78%	292,488	3.20%	292,326	-0.06%
<i>below 150 percent</i>	340,268	358,521	5.36%	360,746	0.62%	359,822	-0.26%
<i>below 185 percent</i>	436,036	446,520	2.40%	460,619	3.16%	463,393	0.60%
<i>below 200 percent</i>	474,845	477,912	0.65%	488,203	2.15%	498,307	2.07%
<i>Palm Beach County</i>							
<i>below 50 percent</i>	90,430	85,539	-5.41%	93,911	9.79%	83,603	-10.98%
<i>below 125 percent</i>	271,307	267,685	-1.34%	262,815	-1.82%	279,058	6.18%
<i>below 150 percent</i>	333,851	341,303	2.23%	325,970	-4.49%	352,927	8.27%
<i>below 185 percent</i>	439,193	441,435	0.51%	431,839	-2.17%	450,015	4.21%
<i>below 200 percent</i>	468,071	478,207	2.17%	472,717	-1.15%	489,951	3.65%

Neighborhood Health Clinic Collier County Community Profile 2016

Region	2011	2012	% change from previous year	2013	% change from previous year	2014	% change from previous year
<i>Sarasota County</i>							
<i>below 50 percent</i>	18,853	20,959	11.17%	25,383	21.11%	18,153	-28.48%
<i>below 125 percent</i>	55,165	65,043	17.91%	65,892	1.31%	53,275	-19.15%
<i>below 150 percent</i>	70,771	81,625	15.34%	83,943	2.84%	75,020	-10.63%
<i>below 185 percent</i>	103,724	109,350	5.42%	102,154	-6.58%	100,248	-1.87%
<i>below 200 percent</i>	115,179	118,950	3.27%	115,821	-2.63%	109,740	-5.25%

Source: U.S. Census Bureau, American Community Survey. (2011–2014). *S17001: Poverty Status in the Past 12 month.*[Data file]. Retrieved from <http://factfinder.census.gov/>

Percentage change calculated by research team

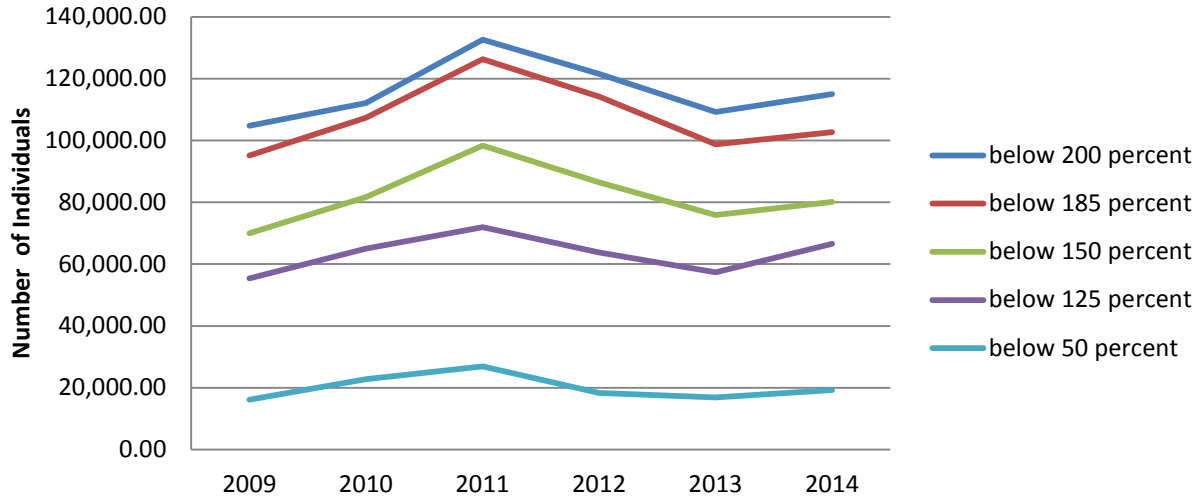
The table above presents information on individuals below the 200 percent poverty level for the years 2011 to 2014. Nationally, from 2013 to 2014 the number of individuals below all five observed poverty levels declined. At the state level, only the number of individuals below 50 percent of the poverty level declined, while all other groups increased by less than one percent.

From 2011 to 2013, Collier County experienced large percentage declines of individuals below all five observed poverty levels. This trend was reversed from 2013 to 2014 where all five poverty levels observed increased at a higher rate compared to all other geographical areas observed. Comparing the observed geographical areas from 2013 to 2014, it is noteworthy that the number of individuals below 50 percent of the poverty level increased in Collier County and Orange County by 14.02 percent, and 2.19 percent respectively. On the other, Lee County experienced a decline of 24.91 percent, Palm Beach County declined by 10.98 percent, and Sarasota County by 28.48 percent. The Collier County trend line is shown in Figure 5 below.

Neighborhood Health Clinic Collier County Community Profile 2016

Figure 5 Collier County Individuals Below 200 Percent Poverty Level – By Poverty Levels

Collier County Individuals Below 200 Percent Poverty Level

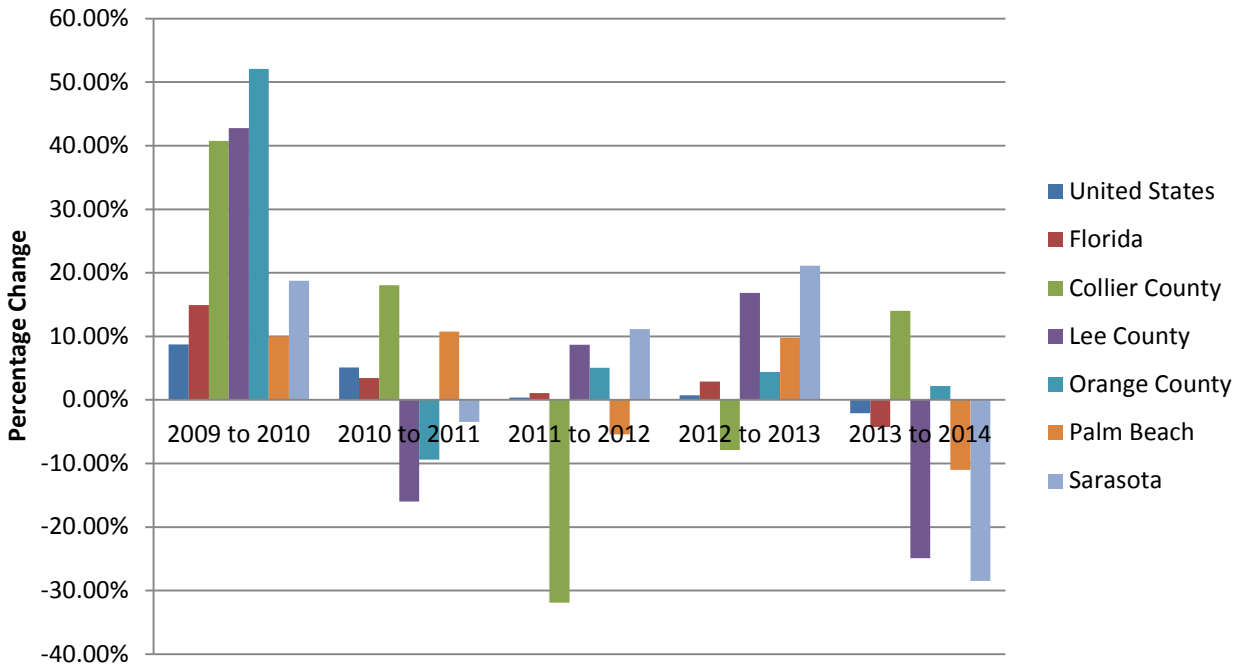


Source: U.S. Census Bureau, American Community Survey. (2009–2014). S1701: Poverty status in the past 12 months [Data file]. Retrieved from <http://factfinder.census.gov>

Neighborhood Health Clinic Collier County Community Profile 2016

Figure 6 Percentage Change - Population Below 50 Percent Poverty Level

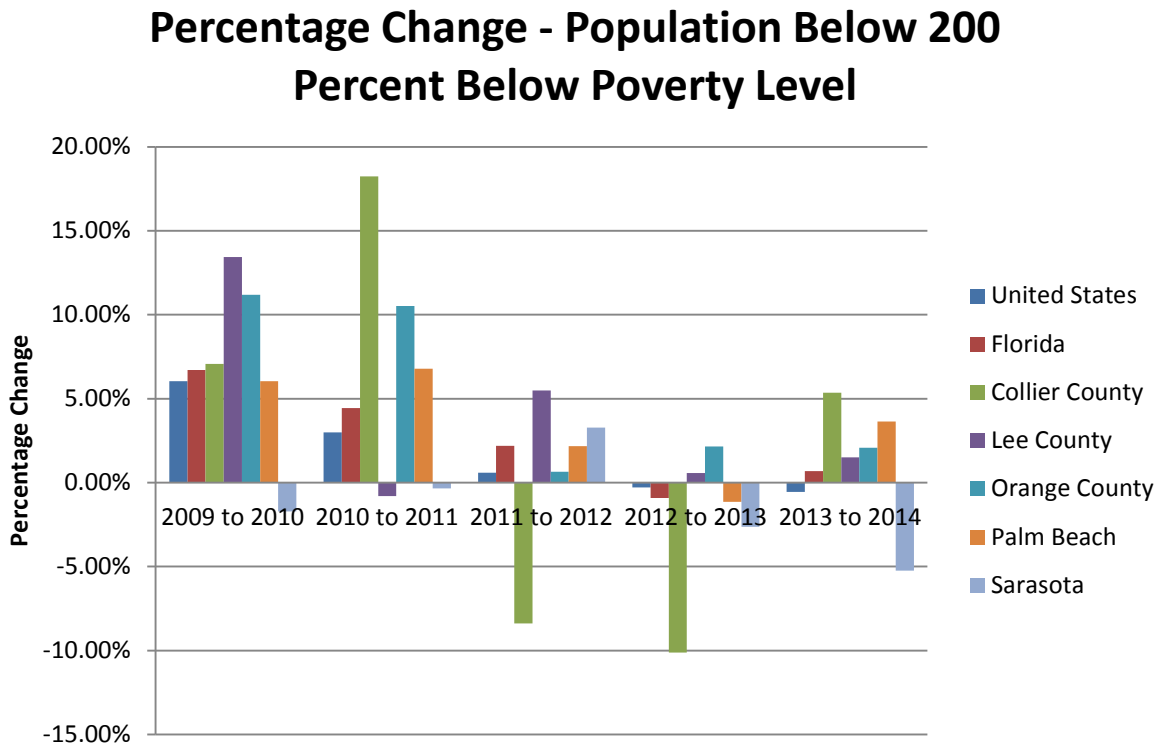
Percentage Change - Population Below 50 Percent Poverty Level



Source: U.S. Census Bureau, American Community Survey. (2009–2014). S1701: Poverty status in the past 12 months [Data file]. Retrieved from <http://factfinder.census.gov>

Neighborhood Health Clinic Collier County Community Profile 2016

Figure 7 Percentage Change - Population Below 200 Percent Below Poverty Level



Source: U.S. Census Bureau, American Community Survey. (2009–2014). S1701: Poverty status in the past 12 months [Data file]. Retrieved from <http://factfinder.census.gov>

Neighborhood Health Clinic Collier County Community Profile 2016

Employment, Poverty and Health Insurance Coverage

Table 6 Health Insurance Coverage Status for Employed Individuals, 18-64 Years

	2010	2011	2012	2013	2014
<u>United States</u>					
Total Employed	131,727,379	132,900,485	134,769,382	136,491,878	138,970,640
With health insurance	108,071,654	109,165,743	110,806,227	112,298,394	119,044,570
With private health insurance	102,286,772	103,056,784	104,330,224	105,507,204	110,167,527
With public health coverage	8,341,586	8,716,891	9,150,460	9,555,004	11,893,690
No health insurance coverage	23,655,725	23,734,742	23,963,155	24,193,484	19,926,070
Percent no health insurance	17.96%	17.86%	17.78%	17.73%	14.34%
<u>Florida</u>					
Total Employed	7,497,839	7,628,783	7,779,640	7,908,658	8,153,295
With health insurance	5,552,605	5,650,697	5,767,065	5,840,768	6,382,756
With private health insurance	5,290,292	5,357,002	5,425,156	5,487,225	5,965,176
With public health coverage	396,831	426,054	486,140	501,258	586,197
No health insurance coverage	1,945,234	1,978,086	2,012,575	2,067,890	1,770,539
Percent no health insurance	25.94%	25.93%	25.87%	26.15%	21.72%
<u>Collier County</u>					
Total Employed	112,641	120,223	121,451	124,056	131,398
With health insurance	77,005	79,443	79,073	83,979	90,838
With private health insurance	73,364	74,284	73,079	78,279	86,197
With public health coverage	4,696	6,262	6,719	6,917	5,839
No health insurance coverage	35,636	40,780	42,378	40,077	40,560
Percent no health insurance	31.64%	33.92%	34.89%	32.31%	30.87%
<u>Lee County</u>					
Total Employed	214,963	222,884	230,744	239,676	252,791
With health insurance	151,276	158,566	162,696	165,844	188,157
With private health insurance	143,699	151,496	149,309	156,515	176,855
With public health coverage	11,199	10,139	18,164	13,750	15,979
No health insurance coverage	63,687	64,318	68,048	73,832	64,634
Percent no health insurance	29.63%	28.86%	29.49%	30.80%	25.57%
<u>Orange County</u>					
Total Employed	528,209	540,155	564,194	576,721	590,208
With health insurance	400,380	403,352	417,310	430,995	466,591
With private health insurance	384,928	385,091	399,916	409,249	441,092
With public health coverage	23,946	26,359	23,641	30,355	36,464
No health insurance coverage	127,829	136,803	146,884	145,726	123,617
Percent no health insurance	24.20%	25.33%	26.03%	25.27%	20.94%
<u>Palm Beach County</u>					
Total Employed	531,784	526,373	549,321	572,147	584,187
With health insurance	391,820	388,242	405,792	419,653	453,557
With private health insurance	377,697	370,433	384,112	396,710	425,200
With public health coverage	19,748	24,328	27,896	29,878	36,508
No health insurance coverage	139,964	138,131	143,529	152,494	130,630
Percent no health insurance	26.32%	26.24%	26.13%	26.65%	22.36%

Neighborhood Health Clinic Collier County Community Profile 2016

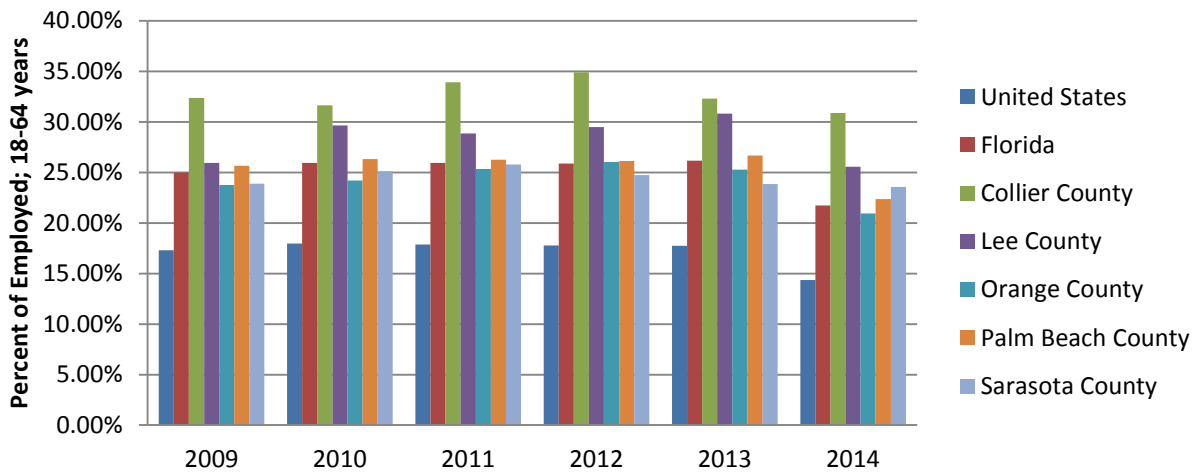
Sarasota County

Total Employed	132,776	135,883	135,448	129,736	142,952
With health insurance	99,439	100,848	101,959	98,791	109,258
With private health insurance	94,654	96,106	97,753	92,771	103,620
With public health coverage	7,362	6,257	7,212	9,505	9,506
No health insurance coverage	33,337	35,035	33,489	30,945	33,694
Percent no health insurance	25.11%	25.78%	24.72%	23.85%	23.57%

Source: U.S. Census Bureau, American Community Survey. (2010–2014). *B27011: Health insurance coverage status and type by employment status by age* [Data file]. Retrieved from <http://factfinder.census.gov>

Figure 8 Percentage of Employed Individuals with No Health Insurance (18-64 Years)

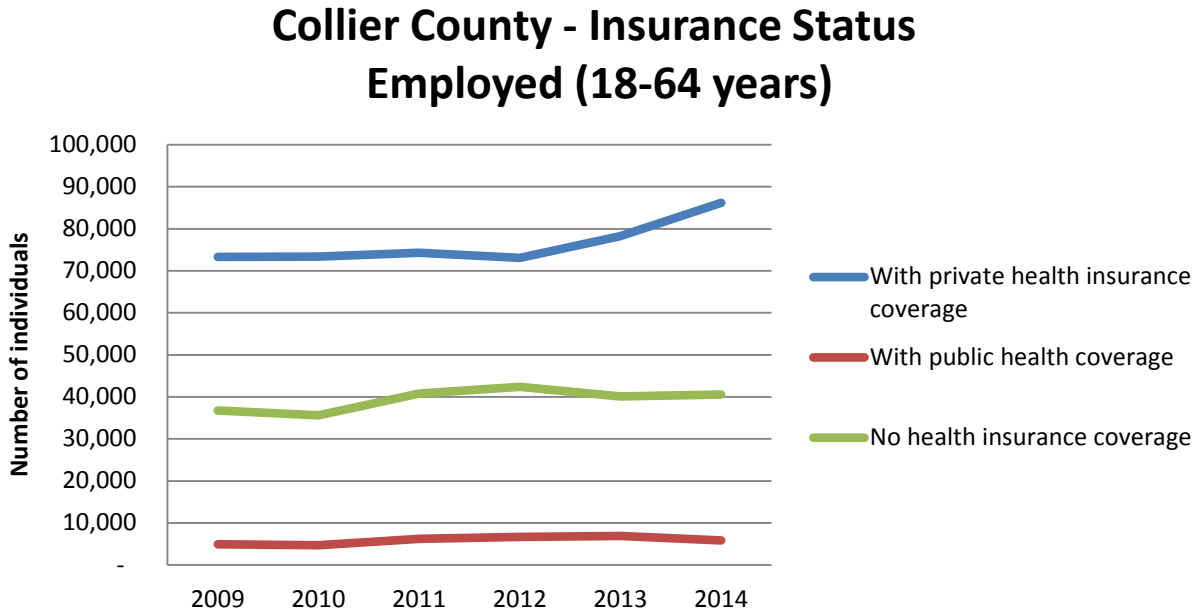
Employed, No Health Insurance Coverage (18-64 Years)



Source: U.S. Census Bureau, American Community Survey. (2009–2014). *B27011: Health insurance coverage status and type by employment status by age* [Data file]. Retrieved from <http://factfinder.census.gov>

Neighborhood Health Clinic Collier County Community Profile 2016

Figure 9 Collier County Employed Individuals by Health Insurance Coverage (18-64 Years)



Source: U.S. Census Bureau, American Community Survey. (2010–2014). *B27011: Health insurance coverage status and type by employment status by age* [Data file]. Retrieved from <http://factfinder.census.gov>

Table 6 documents the number of employed individuals between 18 to 64 years of age by health insurance coverage status. It is notable that from 2010 to 2014 the percentage of uninsured employed individuals decreased in all observed geographical areas, while the number of employed individuals increased. However, with 30.87 percent, the percentage of uninsured individuals in the observed target group in Collier County remains above national and state percentage (Figure 8). Further, it must be noted that the number of employed individuals without health insurance coverage remained above 40,000 since 2011, with a peak in 2012 of 42,378, and an increase from 40,077 in 2013 to 40,560 in 2014 (Figure 9).

Neighborhood Health Clinic Collier County Community Profile 2016

Table 7 Individuals of Age 18-64 with Income Below 200 Percent Poverty Level without Private Health Insurance

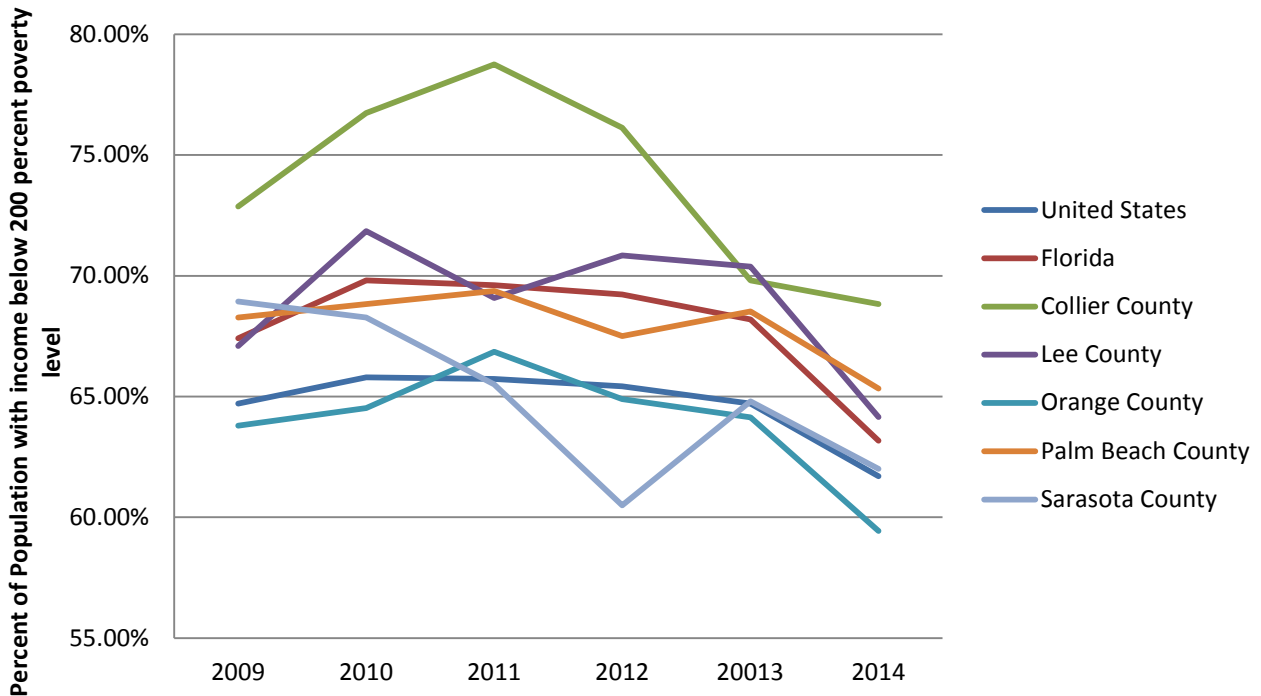
Region/ratio of income to poverty	2010	2011	2012	20013	2014
<i>United States</i>					
Below 200 percent of federal poverty level	59,075,649	61,163,818	61,407,309	61,333,244	60,916,860
no private insurance	38,866,448	40,198,916	40,178,960	39,690,016	37,589,361
as percentage	65.79%	65.72%	65.43%	64.71%	61.71%
<i>Florida</i>					
Below 200 percent of federal poverty level	3,994,492	4,188,566	4,255,451	4,188,559	4,196,362
no private insurance	2,788,723	2,915,725	2,945,928	2,856,409	2,651,148
as percentage	69.81%	69.61%	69.23%	68.20%	63.18%
<i>Collier County</i>					
Below 200 percent of federal poverty level	63,738	75,457	66,547	58,175	63,442
no private insurance	48,912	59,422	50,658	40,608	43,670
as percentage	76.74%	78.75%	76.12%	69.80%	68.83%
<i>Lee County</i>					
Below 200 percent of federal poverty level	132,835	127,770	135,581	135,774	137,471
no private insurance	95,448	88,266	96,047	95,563	88,192
as percentage	71.85%	69.08%	70.84%	70.38%	64.15%
<i>Orange County</i>					
Below 200 percent of federal poverty level	268,266	296,224	289,956	296,671	307,185
no private insurance	173,110	198,027	188,180	190,265	182,568
as percentage	64.53%	66.85%	64.90%	64.13%	59.43%
<i>Palm Beach</i>					
Below 200 percent of federal poverty level	242,864	258,107	267,465	262,197	267,191
no private insurance	167,176	179,066	180,542	179,681	174,561
as percentage	68.84%	69.38%	67.50%	68.53%	65.33%
<i>Sarasota County</i>					
Below 200 percent of federal poverty level	64,169	60,682	63,154	62,337	56,388
no private insurance	43,808	39,752	38,204	40,395	34,961
as percentage	68.27%	65.51%	60.49%	64.80%	62.00%

Source: U.S. Census Bureau, American Community Survey. (2010–2014). B27017: Private health insurance by ratio of income to poverty level in the last 12 months by age [Data file]. Retrieved from <http://factfinder.census.gov/>

Neighborhood Health Clinic Collier County Community Profile 2016

Figure 10 Individuals of Age 18-64 with Income Below 200 Percent Poverty Level without Private Health Insurance

Percent of Population with Income Below 200 Percent Poverty Level without Private Health Insurance (18-64 years)



Source: U.S. Census Bureau, American Community Survey. (2009–2014). B27017: Private health insurance by ratio of income to poverty level in the last 12 months by age [Data file]. Retrieved from <http://factfinder.census.gov/>

Table 7 and Figure 10 document the percentage of individuals between 18 and 64 years with income below the 200 percent poverty level without private health insurance. The percentage has decreased, but remains above national and state level in Collier County. Also, the number of individuals with income below the 200 percent poverty level increased from 40,608 in 2013 to 43,670 in 2014.

Neighborhood Health Clinic Collier County Community Profile 2016

Chronic Diseases

Table 8 County Death Data Comparison 2014

Socio-Demographic Indicators	Measure	Collier	Lee	Orange	Palm Beach	Sarasota	Florida
Total population	Count	340,146	659,800	1,233,793	1,362,383	389,911	19,548,031
Population 18-64 Years	Count	182,984	375,055	805,609	787,176	206,276	11,858,052
Total Deaths Under 65	Count	494	1,438	2,337	2,722	842	45,062
Percent of Deaths Under 65	Percent of Total Deaths Under 65	16.1	22.2	32.4	19.6	16	24.4
HIV/AIDS Deaths	Count	3	18	43	64	4	878
HIV/AIDS Age Adjusted Death Rate	Per 100,000 Total Population	1	2	3	4	1	4
Pneumonia/Influenza Deaths	Count	29	55	102	183	76	2,663
Pneumonia/Influenza Age Adjusted Death Rate	Per 100,000 Total Population	5	6	10	7	7	10
Cancer Deaths	Count	782	1,618	1,646	3,241	1,220	42,330
Cancer Age Adjusted Death Rate	Per 100,000 Total Population	121	146	150	141	141	156
Chronic Liver Disease and Cirrhosis Deaths	Count	57	122	119	194	89	2,996
Chronic Liver Disease and Cirrhosis Age Adjusted Death Rate	Per 100,000 Total Population	12	13	10	11	14	12
Chronic Lower Respiratory Disease Deaths	Count	177	393	348	695	266	11,089
Chronic Lower Respiratory Disease Age Adjusted Death Rate	Per 100,000 Total Population	25	34	33	26	28	39
Diabetes Deaths	Count	66	177	251	279	89	5,324
Diabetes Age Adjusted Death Rate	Per 100,000 Total Population	11	17	23	13	12	20
Heart Disease Deaths	Count	654	1,615	1,595	3,357	1,160	43,747
Heart Disease Age Adjusted Death Rate	Per 100,000 Total Population	95	144	151	124	118	155
Stroke Deaths	Count	167	248	378	789	287	9,605
Stroke Age Adjusted Death Rate	Per 100,000 Total Population	24	22	36	30	28	34
Alzheimer's Deaths	Count	186	148	201	642	158	5,814
Alzheimer's Age-Adjusted Death Rate	Per 100,000 Total Population	25	13	20	21	14	19

Source: Bureau of Health, Bureau of Vital Statistics.(2015) *County death data comparison for 2014*. Retrieved from www.floridacharts.com

Neighborhood Health Clinic Collier County Community Profile 2016

Table 9 Alzheimer Disease Death Rate

Alzheimer's Disease Crude Death Rate, Ages 18-64, 3-Year Rolling Rates						
	<u>Collier Rate</u>	<u>Lee Rate</u>	<u>Orange Rate</u>	<u>Palm Beach Rate</u>	<u>Sarasota Rate</u>	<u>Florida Rate</u>
1993-95	0.6	0.5	0.2	0.1	0.4	0.2
1994-96	0.6	0.3	0.1	0.1	0.4	0.2
1995-97	0.6	0.2	0.1	0.1	0.4	0.2
1996-98	0.3	0.3	0.1	0.1	0	0.2
1997-99	0.3	0.3	0.2	0.1	0.4	0.2
1998-00	0.2	0.1	0.3	0.4	0.6	0.3
1999-01	0	0	0.2	0.4	0.8	0.3
2000-02	0.2	0.1	0.3	0.4	0.6	0.3
2001-03	0.4	0.3	0.2	0.2	0.4	0.3
2002-04	0.4	0.2	0.3	0.4	0.4	0.3
2003-05	0.2	0.6	0.3	0.5	0.2	0.3
2004-06	0.4	0.6	0.2	0.4	0.5	0.4
2005-07	0.4	1.2	0.4	0.2	0.7	0.4
2006-08	0.4	0.9	0.4	0.3	0.7	0.4
2007-09	0.2	0.9	0.6	0.4	0.3	0.3
2008-10	0.4	0.4	0.4	0.3	0.2	0.3
2009-11	0.6	0.6	0.5	0.2	0.3	0.3
2010-12	0.6	0.8	0.3	0.3	0.7	0.4
2011-13	0.4	0.7	0.6	0.4	0.8	0.4
2012-14	0.4	0.5	0.3	0.5	0.8	0.4

Source: Florida department of Health, Division of Public Health Statistics & Performance management. (2016). Alzheimer's Disease Deaths. Retrieved from www.floridacharts.com

The three-year rolling death rates shown in Table 9 are Alzheimer related deaths per 100,000 populations for the age group 18 to 64 years. The rate peak in Collier County in 2009-11 with 0.6 and has since declined to 0.4 which is equal to the state death rate. However, when reviewing the Alzheimer related death rate without age restrictions Collier County has a reported rate of 26.4, which is above the reported state rate of 17.5. However, Calhoun County reported the highest rate with 71 in Florida (Florida Department of Health, 2016).

Neighborhood Health Clinic Collier County Community Profile 2016

Table 10 All Cancers, Crude Death Rate

All Cancers, Crude Death Rate, Ages 18-64, 3-Year Rolling Rates

	<u>Collier Rate</u>	<u>Lee Rate</u>	<u>Orange Rate</u>	<u>Palm Beach Rate</u>	<u>Sarasota Rate</u>	<u>Florida Rate</u>
1993-95	101.3	120.1	90.7	107.9	128.2	111.4
1994-96	102.2	119.7	90.6	105.4	131.1	110.2
1995-97	106.1	118.3	87.6	103.6	130.5	108.8
1996-98	104.8	115.2	83	102.6	130.5	106.6
1997-99	95.8	116.2	79.9	98.8	124.9	104.9
1998-00	91.4	110.7	78.8	95.4	127.9	103.6
1999-01	92.9	114.7	78.6	97.8	126.5	103.3
2000-02	93	116.5	79.6	99	129.7	103.2
2001-03	90	118.9	78.5	99.6	128.8	103.8
2002-04	85.2	112	77.2	94.9	123.7	103.3
2003-05	88.4	106.9	76.1	92.6	122.7	103.5
2004-06	90.4	109.5	74.6	89.9	120	102.3
2005-07	84	114.1	75.6	90.1	122.5	101.1
2006-08	84.4	110.5	74.8	91.8	124.7	100.3
2007-09	84.4	105.6	76.1	92.5	125.9	100.1
2008-10	88.8	102.1	76.1	91.7	123.9	100.6
2009-11	87.5	105.5	75.4	87.2	119.9	99.9
2010-12	91.4	103	76.2	88	119.2	99.8
2011-13	87	101.6	75.3	85.7	121.6	99.5
2012-14	80.8	100.3	73.2	88.6	120.8	98.8

Source: Florida department of Health, Division of Public Health Statistics & Performance management. (2016). *All Cancers, Crude Death Rate*. Retrieved from www.floridacharts.com

The three-year rolling death rates shown in Table 10 are all cancer related deaths per 100,000 populations for the age group 18 to 64 years. Cancer related death rates for the observed age group in Collier County has declined to 80.8 in 2012-14, which is below the state rate of 98.8. Although not shown in the table, according to the Florida Department of Health, for 2012-14 Union County had the highest cancer related death rate for the age group 18-64 with a rate of 397. When observing the total population without age restrictions, Collier County had the lowest cancer death rate with 122.6 in 2012-14, while Union County had the highest rate with 428.1. For all observed counties the cancer related death rate for the total population is below the state rate of 158.1 in 2012-14 (Florida Department of Health, 2016).

Neighborhood Health Clinic Collier County Community Profile 2016

Cardiovascular Diseases

Table 11 Adults Who Have Ever Been Told They Had Hypertension

	2002	2007	2010	2013
Florida				
18-44	11.8%	11.6%	13.2%	13.8%
45-64	33.3%	33.9%	36.8%	41.1%
Collier County				
18-44	10.0%	10.8%	8.5%	11.7%
45-64	24.1%	30.6%	26.8%	37.8%
Lee County				
18-44	9.9%	11.0%	13.5%	10.1%
45-64	33.6%	32.8%	29.6%	46.9%
Orange County				
18-44	10.8%	8.2%	18.4%	14.5%
45-64	30.1%	42.9%	39.7%	39.9%
Palm Beach County				
18-44	8.6%	7.0%	6.6%	12.6%
45-64	29.9%	27.7%	25.6%	37.2%
Sarasota County				
18-44	12.0%	3.5%	19.9%	17.6%
45-64	30.1%	33.5%	32.3%	35.4%

Source: Florida department of Health, Division of Public Health Statistics & Performance management. (2016). *Hypertension awareness and control*. Retrieved from www.floridacharts.com

Table 12 Adults with Hypertension Who Currently Take High Blood Pressure Medicine

	2002	2007	2010	2013
Florida	76.0%	82.1%	82.8%	79.4%
Collier County	70.8%	77.1%	76.9%	80.7%
Lee County	84.6%	81.7%	82.6%	82.0%
Orange County	75.3%	76.7%	76.0%	73.5%
Palm Beach County	80.6%	54.6%	86.0%	85.2%
Sarasota County	75.9%	86.0%	80.9%	81.7%

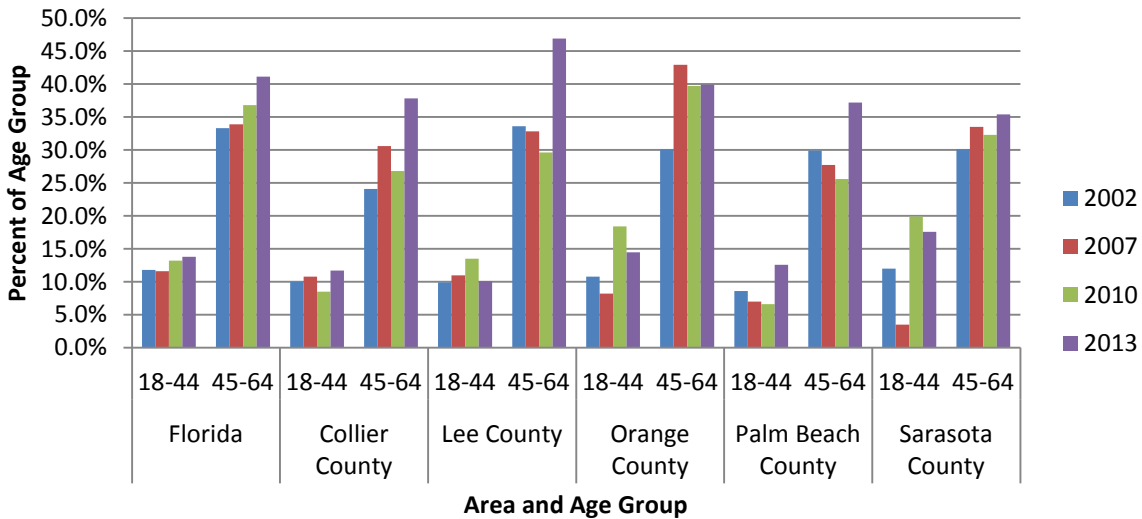
Source: Florida department of Health, Division of Public Health Statistics & Performance management. (2016). *Hypertension awareness and control*. Retrieved from www.floridacharts.com

In 2013, the percentage of the population diagnosed with hypertension increased to 11.7 percent for the age group 18-44 from 8.5 percent in the previous year, and to 37.8 percent for the age group 45-64 years. Of the total population diagnosed with hypertension, 80.7 percent take high blood pressure medicine.

Neighborhood Health Clinic Collier County Community Profile 2016

Figure 11 Adults Who Have Ever Been Told They Had Hypertension

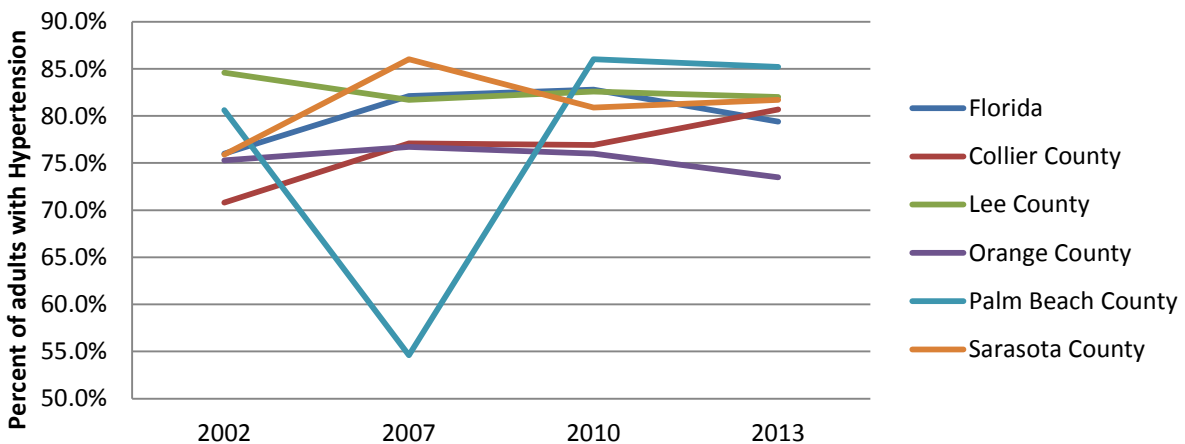
Adults Who Have Ever Been Told They Had Hypertension



Source: Florida department of Health, Division of Public Health Statistics & Performance management. (2016). *Hypertension awareness and control*. Retrieved from www.floridacharts.com

Figure 12 Adults with Hypertension Who Currently Take High Blood Pressure Medicine

Adults with Hypertension - Take Medicine



Source: Florida department of Health, Division of Public Health Statistics & Performance management. (2016). *Hypertension awareness and control*. Retrieved from www.floridacharts.com

Neighborhood Health Clinic Collier County Community Profile 2016

Table 13 Hypertension Crude Death Rate

		Hypertension Crude Death Rate Ages 18-44 and 45-65 3-Year Rolling Rates						
		<u>2006-08</u>	<u>2007-09</u>	<u>2008-10</u>	<u>2009-11</u>	<u>2010-12</u>	<u>2011-13</u>	<u>2012-14</u>
Collier County								
	18-44 years	0	0	0.4	0.7	0.7	0.4	0
	45-65 years	1.6	1.2	2	2.7	2.7	3.9	3
Lee County								
	18-44 years	0.2	0.2	0.2	0.4	0.4	0.4	0.2
	45-65 years	2.5	2.8	3.4	3.3	2.9	3.4	4.9
Orange County								
	18-44 years	0.4	0.4	0.4	0.3	0.3	0.5	0.5
	45-65 years	3.3	2.6	3.8	3.9	4.6	4.1	3.8
Palm Beach County								
	18-44 years	0.7	0.6	0.3	0.6	0.6	0.7	0.6
	45-65 years	3.4	4.1	5.4	6.8	6.6	6.3	5.7
Sarasota								
	18-44 years	0.4	0	0	0	0	0	0
	45-65 years	2.2	3	3.6	4.5	4.2	4.8	5.4
Florida								
	18-44 years	0.6	0.6	0.6	0.6	0.6	0.6	0.6
	45-65 years	5.2	5.4	5.8	5.9	5.9	6.3	6.6

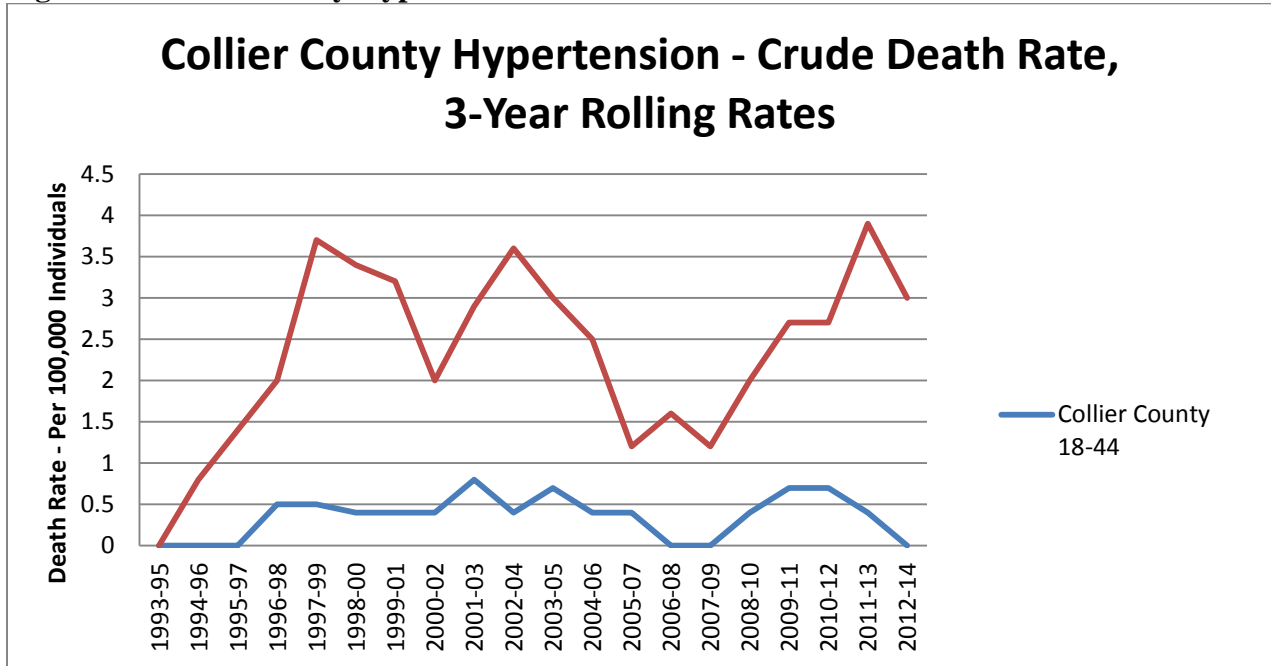
Source: Florida department of Health, Division of Public Health Statistics & Performance management. (2016). Hypertension Deaths. Retrieved from www.floridacharts.com

The crude hypertension death rate for the age group 45-65 in Collier County increased from 1.6 in 2006-08 to 3.9 in 2011-13, and declined to 3 in 2012-14. For the observed areas, Collier County has the lowest hypertension death rate for this age group.

For 2012-14, without age restrictions, the hypertension death rate in Collier County is reported as 9.3, which remains below the state rate of 10.8. Although not shown in the table, in 2012-14, Citrus County has the highest hypertension death rate with 38.3.

Neighborhood Health Clinic Collier County Community Profile 2016

Figure 13 Collier County Hypertension - Crude Death Rate



Source: Florida department of Health, Division of Public Health Statistics & Performance management. (2016). Hypertension Deaths. Retrieved from www.floridacharts.com

Neighborhood Health Clinic Collier County Community Profile 2016

Table 14 Major Cardiovascular Diseases Crude Death Rate

	Major Cardiovascular Diseases Crude Death Rate, Ages 18-64, 3-Year Rolling Rates					
	Collier Rate	Lee Rate	Orange Rate	Palm Beach Rate	Sarasota Rate	Florida Rate
1993-95	73.9	100.4	72.6	78	102.6	94.6
1994-96	72.2	97.4	71.6	76.9	98.4	93.3
1995-97	72.4	98.4	70.6	78.8	93.5	92.4
1996-98	70.5	95.4	68.8	78.2	87.1	91.2
1997-99	67.6	93.4	69	79.4	88.1	89.6
1998-00	65.9	92.6	70.9	77.4	90.6	88.5
1999-01	61.9	91.8	67	76.1	88	87.1
2000-02	56	90	67.1	72.3	84.3	86.4
2001-03	52.9	86.4	65	73	82.3	85.8
2002-04	48.8	87	66.1	71.9	78.9	85.2
2003-05	48.7	86.4	64.3	71.3	79.3	83.7
2004-06	47.1	87.8	62.9	66.6	79	82
2005-07	49.7	83.6	61.9	66.3	82.8	80.2
2006-08	48.7	80	59.9	65.5	83.5	78.8
2007-09	48	78.1	58	67.8	79.9	78.2
2008-10	46.1	76.7	55.8	66.7	84	77
2009-11	48.9	74.6	55.6	65.3	78.9	76.2
2010-12	48.4	75.3	55.8	65.7	80.1	76
2011-13	47.2	77.6	57.9	65.3	73.9	76.4
2012-14	43.1	79.1	58.2	67	78.3	77.5

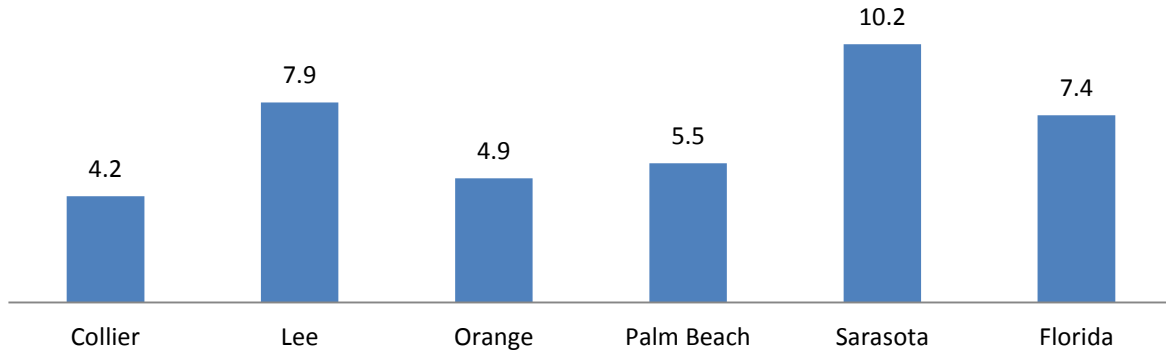
Source: Florida department of Health, Division of Public Health Statistics & Performance management. (2016). *Major Cardiovascular Diseases Age-Adjusted Death Rate*. Retrieved from www.floridacharts.com

Since 2009-11, the death rate for major cardiovascular diseases for the age group 18-64 declined to 43.1 in 2012-14 for Collier County, while the rate increased for all other observed areas. Although not shown in the table, Union County, Florida, has the highest reported death rate related to major cardiovascular diseases for the age group 18 to 64 (Florida Department of Health, 2016).

Neighborhood Health Clinic Collier County Community Profile 2016

Respiratory Diseases

Figure 14 2013 Adults Who Have Ever Been Told They Had COPD, Emphysema or Chronic Bronchitis



Source: Florida department of Health, Division of Public Health Statistics & Performance management. (2016). *Adults who have ever been told they had chronic obstructive pulmonary disease, emphysema, or chronic bronchitis.* Retrieved from www.floridacharts.com

Table 15 Asthma Crude Death Rate

	Asthma Crude Death Rate, Ages 18-64, 3-Year Rolling Rates					
	Collier Rate	Lee Rate	Orange Rate	Palm Beach Rate	Sarasota Rate	Florida Rate
1993-95	2.2	0.8	1.4	1.1	2.4	1.3
1994-96	1.5	0.6	1.3	0.9	2.6	1.4
1995-97	0.9	0.6	1.2	1	2.4	1.4
1996-98	1.1	0.9	1	0.8	0.8	1.3
1997-99	1.3	1	1.1	0.9	0.2	1.1
1998-00	1.5	1.4	1	0.8	0.8	1.1
1999-01	0.7	0.7	1.2	0.7	0.8	1.1
2000-02	0.2	0.8	1	0.8	0.9	1.1
2001-03	0	0.5	0.7	0.7	0.4	1
2002-04	0	0.7	0.6	0.5	0.2	0.9
2003-05	0	1	0.6	0.4	0.5	0.9
2004-06	0.2	1	0.6	0.5	0.5	0.8
2005-07	0.2	0.9	0.5	0.5	0.7	0.8
2006-08	0.4	0.6	0.6	0.4	0.7	0.7
2007-09	0.4	0.4	0.7	0.4	0.7	0.8
2008-10	0.6	0.6	0.8	0.6	0.8	0.8
2009-11	0.6	0.5	0.8	0.6	1.2	0.8
2010-12	0.4	1	0.6	0.7	1.5	0.8
2011-13	0.4	1	0.6	0.8	1.1	0.8
2012-14	0.2	0.9	0.6	1.1	0.3	0.9

Source: Florida department of Health, Division of Public Health Statistics & Performance management. (2016). *Asthma Crude Death Rate.* Retrieved from www.floridacharts.com

Neighborhood Health Clinic Collier County Community Profile 2016

Table 16 Chronic Lower Respiratory Disease

Chronic Lower Respiratory Disease (CLRD)							
Crude Death Rate, Ages 18-64, 3-Year Rolling Rates							
	<u>Collier Rate</u>	<u>Lee Rate</u>	<u>Orange Rate</u>	<u>Palm Beach Rate</u>	<u>Sarasota Rate</u>	<u>Florida Rate</u>	
1993-95	9.2	12.2	7.3	8.1	10.6	10.3	
1994-96	8.9	12.1	8.2	6.9	12.6	10.1	
1995-97	8.8	10.8	7.9	7.2	12.2	10.2	
1996-98	8.9	10.8	8.7	6.9	10.9	10.1	
1997-99	8.9	11.3	8.1	7.2	10.4	10.3	
1998-00	8.4	11.7	8.6	6.4	11.8	10.4	
1999-01	9	11	8.6	6.6	12.6	10.7	
2000-02	7	11.8	8.6	6.3	11.7	10.4	
2001-03	6.1	11	8.4	6.6	11.8	10.6	
2002-04	5.2	11.7	8.1	6.6	10.5	10.3	
2003-05	6.2	11.8	8.1	7.3	9.9	10.7	
2004-06	5.6	11	7.5	8.1	8.5	10.5	
2005-07	4.6	10.1	7.3	7.8	7.6	10.6	
2006-08	4.5	8.7	7.3	6.9	8.2	10.7	
2007-09	6.6	8.8	7.5	6.6	9.9	11.3	
2008-10	8.5	9.8	7.5	7.9	11.3	11.6	
2009-11	9.5	10.7	6.9	8.3	10.9	11.7	
2010-12	8.2	11.3	6.5	8.2	10.4	11.6	
2011-13	8.1	12.2	5.8	7.2	10.5	11.9	
2012-14	7.4	12.6	5.9	7.1	11.5	12.4	

Source: Florida department of Health, Division of Public Health Statistics & Performance management. (2016).
Chronic Lower Respiratory Disease (CLRD). Retrieved from www.floridacharts.com

Neighborhood Health Clinic Collier County Community Profile 2016

Table 17 Influenza and Pneumonia Crude Death Rate

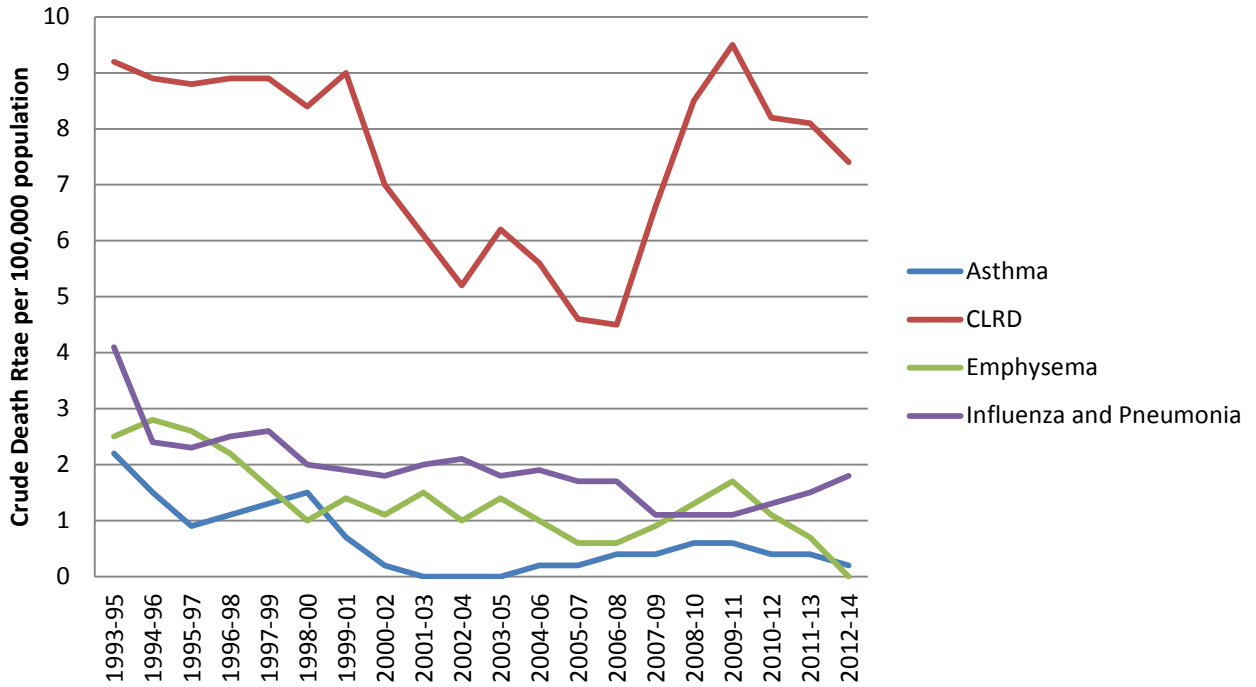
Influenza and Pneumonia Crude Death Rate, Ages 18-64, 3-Year Rolling Rates							
	<u>Collier Rate</u>	<u>Lee Rate</u>	<u>Orange Rate</u>	<u>Palm Beach Rate</u>	<u>Sarasota Rate</u>	<u>Florida Rate</u>	
1993-95	4.1	4.6	4.7	4.4	4.6	5.4	5.4
1994-96	2.4	4.7	4.9	4.2	4.1	5.4	5.4
1995-97	2.3	4.9	5	3.8	3	5.3	5.3
1996-98	2.5	4.3	4.4	3.4	4.2	5	5
1997-99	2.6	4	4.6	3.9	3.9	4.5	4.5
1998-00	2	3.4	3.6	3.7	3.8	4	4
1999-01	1.9	4.1	3.6	3.6	3.5	3.6	3.6
2000-02	1.8	3.9	3.5	3	3	3.6	3.6
2001-03	2	4.1	3.4	3.1	3.3	3.6	3.6
2002-04	2.1	3.8	3.5	2.6	3.7	3.7	3.7
2003-05	1.8	4.3	3.5	2.6	3.8	3.6	3.6
2004-06	1.9	3.6	3.5	2.3	3.2	3.4	3.4
2005-07	1.7	2.9	3	2.3	2.7	3.1	3.1
2006-08	1.7	1.9	2.6	2.1	2.4	2.9	2.9
2007-09	1.1	2.3	3	2.6	2.8	3.5	3.5
2008-10	1.1	2.4	3.1	2.7	2.8	3.5	3.5
2009-11	1.1	2.8	3.4	2.8	3.5	3.6	3.6
2010-12	1.3	2.3	2.7	2.2	3.3	3	3
2011-13	1.5	2.2	3.2	2.4	2.6	3.5	3.5
2012-14	1.8	2.4	3	2.7	2.1	3.9	3.9

Source: Florida department of Health, Division of Public Health Statistics & Performance management. (2016).
Influenza and Pneumonia Crude Death Rate. Retrieved from www.floridacharts.com

Neighborhood Health Clinic Collier County Community Profile 2016

Figure 15 Respiratory Diseases - Crude Death Rates

Respiratory Diseases, Crude Death Rate Ages 18-64, 3-Year Rolling Rates



Source: Florida department of Health, Division of Public Health Statistics & Performance management. (2016).
Respiratory Diseases. Retrieved from www.floridacharts.com

Neighborhood Health Clinic Collier County Community Profile 2016

Diabetes

Table 18 Diabetes – Crude Death Rate

Diabetes- Crude Death Rate, Ages 18-64, 3-Year Rolling Rates							
Years	<u>Collier</u>	<u>Lee</u>	<u>Orange</u>	<u>Palm Beach</u>	<u>Sarasota</u>	<u>Florida</u>	
1993-95	7.6	6.9	8.4	7.9	6.2	9.1	
1994-96	7.3	8	8.9	7.9	5.9	9.5	
1995-97	6.7	9.2	9.1	9.5	6	9.6	
1996-98	7	12.2	8.5	8.9	7.3	9.8	
1997-99	6.8	12.8	8.3	9.7	7.8	10.2	
1998-00	5.7	12.3	8.8	9.5	9	10.7	
1999-01	7.3	10.1	8.8	11.2	8.4	10.9	
2000-02	8.2	9.8	8.9	11.1	8	11.1	
2001-03	9	9.5	8.7	11	6.7	11.4	
2002-04	7.5	9.8	8.7	10.3	6.8	11.6	
2003-05	7.6	9.8	8.6	10.7	8.2	11.8	
2004-06	7.8	10.8	7.8	10.4	9.2	11.8	
2005-07	7.6	12.1	7.6	10.2	9.7	12	
2006-08	7.4	12	8.3	9.7	9.4	12.3	
2007-09	8.5	11.9	8.9	9.6	10	12.4	
2008-10	7.9	11.4	9.1	9.9	10.5	12.4	
2009-11	8.3	10.8	8.4	9.7	10.8	12.2	
2010-12	7.6	10.8	8.4	9.5	10	12.3	
2011-13	7.9	11.8	8.7	9.3	11.3	12.3	
2012-14	8.1	12.7	9.4	9.3	11.1	12.6	

Source: Florida department of Health, Division of Public Health Statistics & Performance management. (2016). *Diabetes – Crude Death Rate*. Retrieved from www.floridacharts.com

In Collier County, the diabetes related death rate for the population 18 to 64 years of age has been increasing since 2010 to 8.1 in 2014. All other observed geographical areas also show an increase in diabetes death rate. Also, the rate of preventable hospitalizations from diabetes for individuals under 65 has been increasing in all observed geographical areas.

Neighborhood Health Clinic Collier County Community Profile 2016

Table 19 Preventable Hospitalizations Under 65 from Diabetes

Preventable Hospitalizations Under 65 from Diabetes, 3-Year Rolling Rates						
	<u>Collier</u>	<u>Lee</u>	<u>Orange</u>	<u>Palm Beach</u>	<u>Sarasota</u>	<u>Florida</u>
1993-95	58.5	90.7	80.1	72	49.3	81.2
1994-96	56.2	85.3	74	72.3	50.8	79.6
1995-97	53.5	71.6	72.1	69.8	54.7	77.8
1996-98	51.6	70.8	73.1	70.9	58	78.9
1997-99	46.9	69.8	76	74	58.6	81.5
1998-00	47.4	71.4	79.2	75.7	59.1	85.1
1999-01	48.7	67.3	85	80.1	59.1	88.7
2000-02	50.6	66.7	94.5	83.9	61	92.4
2001-03	54.2	68.8	99.2	87	58.8	95.9
2002-04	53.4	73	101	88.9	58.4	98.1
2003-05	53.5	79.5	101.8	89.8	60.4	100
2004-06	55.1	86.1	105.6	93.2	59.8	102.9
2005-07	60.6	90	111.3	95.2	60.9	105.5
2006-08	69.7	89.6	114.9	99.9	60.1	108.3
2007-09	74	90.5	120.4	104.5	65.5	112.1
2008-10	78.8	94.4	128.2	111.2	71	117.9
2009-11	79	98.8	134	114.1	76.8	123.9
2010-12	84.5	102.3	137.8	116.2	82.5	128
2011-13	82	107.9	142	113	90.3	131.1
2012-14	82.5	121.7	147.3	116.8	92.2	135

Source: Florida department of Health, Division of Public Health Statistics & Performance management. (2016). *Preventable Hospitalizations Under 65 from Diabetes*. Retrieved from www.floridacharts.com

Neighborhood Health Clinic Collier County Community Profile 2016

HIV/AIDS

Table 20 HIV/AIDS- Age-Adjusted Death Rate

HIV/AIDS- Age-Adjusted Death Rate, 3 Year Rolling Rates						
Years	<u>Collier</u>	<u>Lee</u>	<u>Orange</u>	<u>Palm Beach</u>	<u>Sarasota</u>	<u>Florida</u>
1993-95	17.4	26.7	27	40.6	18.6	29.4
1994-96	17.1	22.9	27.3	38.9	14.2	27.7
1995-97	14.5	17.4	21.8	31.2	10.7	21.7
1996-98	9.6	9.3	16.4	21.2	6.2	14.9
1997-99	6.9	6.5	13.6	15	5	11.3
1998-00	6.1	6.6	12.9	13.8	4.2	10.8
1999-01	5.8	6.6	12.4	14	3.5	10.8
2000-02	6.2	5.8	10.8	14.1	3.9	10.7
2001-03	6	4.7	10.7	13.5	3.6	10.4
2002-04	6.5	4.6	10.5	14	4.1	10.2
2003-05	4.5	6.1	10.8	13.5	3.7	10
2004-06	3.6	5.9	10	13.3	3.5	9.8
2005-07	2.8	6.6	9.1	11.6	3.4	9.2
2006-08	2.8	5	8.6	10.6	3.5	8.5
2007-09	3	3.6	7.4	9	3.6	7.4
2008-10	2.6	2.5	6.3	7.3	3	6.5
2009-11	2.2	2.6	5.4	5.9	2.4	5.6
2010-12	1.3	2.9	5.4	4.9	2.1	5
2011-13	1.5	2.7	5.3	4.9	1.7	4.7
2012-14	1.3	2.4	4.5	4.7	1.4	4.4

Source: Florida department of Health, Division of Public Health Statistics & Performance management. (2016).
HIV/AIDS – Age-Adjusted Death Rate. Retrieved from www.floridacharts.com

Table 21 Adults Less Than 65 Years of Age Who Have Ever Been Tested for HIV

Adults less than 65 years of age who have ever been tested for HIV, Overall						
Year	<u>Collier</u>	<u>Lee</u>	<u>Orange</u>	<u>Palm Beach</u>	<u>Sarasota</u>	<u>Florida</u>
2002	48.30%	38.50%	47.30%	46.00%	41.60%	47.70%
2007	38.20%	40.40%	46.10%	52.20%	47.60%	49.10%
2010	34.00%	52.30%	46.40%	45.50%	42.10%	48.40%
2013	55.10%	44.60%	58.50%	42.80%	41.60%	50.60%

Source: Florida department of Health, Division of Public Health Statistics & Performance management. (2016).
Adults less than 65 years of age who have ever been tested for HIV. Retrieved from www.floridacharts.com

Neighborhood Health Clinic Collier County Community Profile 2016

Table 22 HIV Infection Cases, 3-Year Rolling Rates

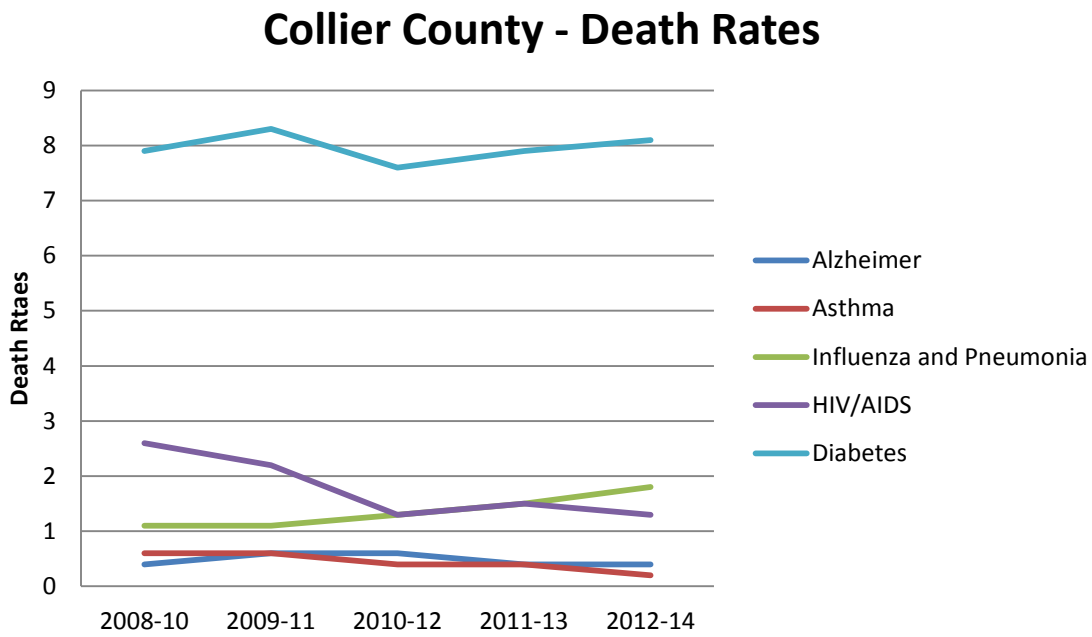
HIV Infection Cases, 3-Year Rolling Rates						
	<u>Collier</u>	<u>Lee</u>	<u>Orange</u>	<u>Palm Beach</u>	<u>Sarasota</u>	<u>Florida</u>
1993-95	26	25.5	51	59	18.5	45.4
1994-96	22.1	25.7	48.5	54.1	18	42.7
1995-97	22.9	26.5	52.4	57.7	18.6	46.7
1996-98	27.9	28.3	58	65	19.3	53
1997-99	31.9	30.9	61.5	72.9	21.5	57.7
1998-00	30	32.2	61.3	71.5	21.7	55.4
1999-01	27.8	31.4	57.6	66.8	21.4	50.6
2000-02	25.6	28.2	54.2	63.1	19.4	47.6
2001-03	24.1	26.3	49.7	57.3	19.2	44.9
2002-04	23.8	22.6	45.8	51.6	16.1	41.6
2003-05	19.5	19	44.2	44	14.6	37.8
2004-06	19.9	16.9	42.1	38.1	11.8	34.3
2005-07	16.4	15.9	41.6	35	12.6	33.4
2006-08	18.5	17.1	40.6	34.2	13.2	33
2007-09	16.2	15.9	40.2	32.4	12.6	31.9
2008-10	15.1	14.3	38.5	28.3	10.2	28.5
2009-11	13.7	13	36.3	24.7	9	25.9
2010-12	12.4	13.2	35.9	22.6	8.6	24.5
2011-13	11.5	13.6	33.8	22.7	9.4	23.8
2012-14	10.4	13.4	32.7	22.6	8.9	23.4

Source: Florida department of Health, Division of Public Health Statistics & Performance management. (2016). *HIV Infection Cases*. Retrieved from www.floridacharts.com

In Florida, the HIV/AIDS death rate declined to 4.4, with Collier County having the lowest HIV/AIDS death rate of 1.3. Also, the rate of HIV cases has been declining to a rate of 10.4 compared to the state HIV infection rate of 23.4. Further, it is notable that the percentage of population below 65 years who ever had been tested for HIV has increased to 55 percent in Collier County, compared to 51 percent in the state of Florida.

Neighborhood Health Clinic Collier County Community Profile 2016

Figure 16 Collier County – Death Rates by Chronic Disease

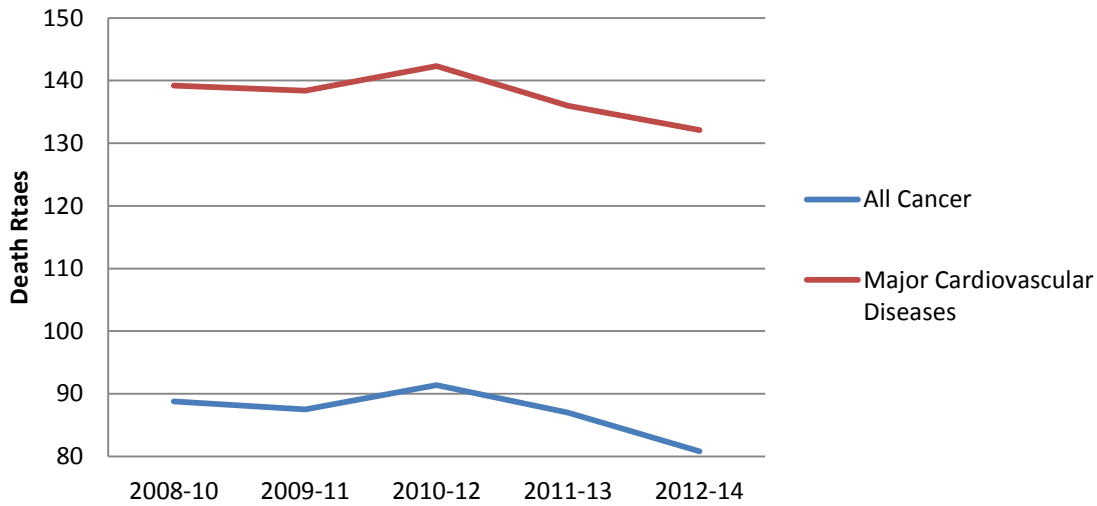


Source: Florida department of Health, Division of Public Health Statistics & Performance management. (2016). *Death Rates by Diseases*. Retrieved from www.floridacharts.com

Neighborhood Health Clinic Collier County Community Profile 2016

Figure 17 Collier County Cancer and Major Cardiovascular- Death Rates

Collier County Cancer and Major Cardiovascular Death Rates



Source: Florida department of Health, Division of Public Health Statistics & Performance management. (2016). *Death Rates by Diseases*. Retrieved from www.floridacharts.com

Neighborhood Health Clinic Collier County Community Profile 2016

Appendix A

Table 23 Poverty Thresholds for 2005

Size of family unit	Weighted average thresholds	Related children under 18 years								Eight or more
		None	One	Two	Three	Four	Five	Six	Seven	
One person (unrelated individual)	9,973									
Under 65 years	10,160	10,160								
65 years and over	9,367	9,367								
Two people	12,755									
Householder under 65 years	13,145	13,078	13,461							
Householder 65 years and over	11,815	11,805	13,410							
Three people	15,577	15,277	15,720	15,735						
Four people	19,971	20,144	20,474	19,806	19,874					
Five people	23,613	24,293	24,646	23,891	23,307	22,951				
Six people	26,683	27,941	28,052	27,474	26,920	26,096	25,608			
Seven people	30,249	32,150	32,350	31,658	31,176	30,277	29,229	28,079		
Eight people	33,610	35,957	36,274	35,621	35,049	34,237	33,207	32,135	31,862	
Nine people or more	40,288	43,254	43,463	42,885	42,400	41,603	40,507	39,515	39,270	37,757

Source: U.S. Census Bureau. (2012, September 12). *Poverty thresholds for 2005 by size of family and number of related children under 18 years*. Retrieved from <https://www.census.gov/hhes/www/poverty/data/threshld/thresh05.html>

Neighborhood Health Clinic Collier County Community Profile 2016

Table 24 Poverty Thresholds for 2006

Size of family unit	Weighted average thresholds	Related children under 18 years								Eight or more	
		None	One	Two	Three	Four	Five	Six	Seven		
One person (unrelated individual)	10,294										
Under 65 years	10,488	10,488									
65 years and over	9,669	9,669									
Two people	13,167										
Householder under 65 years	13,569	13,500	13,896								
Householder 65 years and over	12,201	12,186	13,843								
Three people	16,079	15,769	16,227	16,242							
Four people	20,614	20,794	21,134	20,444	20,516						
Five people	24,382	25,076	25,441	24,662	24,059	23,691					
Six people	27,560	28,842	28,957	28,360	27,788	26,938	26,434				
Seven people	31,205	33,187	33,394	32,680	32,182	31,254	30,172	28,985			
Eight people	34,774	37,117	37,444	36,770	36,180	35,342	34,278	33,171	32,890		
Nine people or more	41,499	44,649	44,865	44,269	43,768	42,945	41,813	40,790	40,536	38,975	

Source: U.S. Census Bureau. (2012, September 12). *Poverty thresholds for 2006 by size of family and number of related children under 18 years*. Retrieved from <https://www.census.gov/hhes/www/poverty/data/threshld/thresh06.html>

Neighborhood Health Clinic Collier County Community Profile 2016

Table 25 Poverty Thresholds for 2007

Size of family unit	Weighted average thresholds	Related children under 18 years								Eight or more	
		None	One	Two	Three	Four	Five	Six	Seven		
One person (unrelated individual)	10,590										
Under 65 years	10,787	10,787									
65 years and over	9,944	9,944									
Two people	13,540										
Householder under 65 years	13,954	13,884	14,291								
Householder 65 years and over	12,550	12,533	14,237								
Three people	16,530	16,218	16,689	16,705							
Four people	21,203	21,386	21,736	21,027	21,100						
Five people	25,080	25,791	26,166	25,364	24,744	24,366					
Six people	28,323	29,664	29,782	29,168	28,579	27,705	27,187				
Seven people	32,233	34,132	34,345	33,610	33,098	32,144	31,031	29,810			
Eight people	35,816	38,174	38,511	37,818	37,210	36,348	35,255	34,116	33,827		
Nine people or more	42,739	45,921	46,143	45,529	45,014	44,168	43,004	41,952	41,691	40,085	

Source: U.S. Census Bureau. (2012, September 12). *Poverty thresholds 2007*. Retrieved from <https://www.census.gov/hhes/www/poverty/data/threshld/thresh07.html>

Neighborhood Health Clinic Collier County Community Profile 2016

Table 26 Poverty Thresholds for 2008

Size of family unit	Weighted average thresholds	Related children under 18 years								Eight or more	
		None	One	Two	Three	Four	Five	Six	Seven		
One person (unrelated individual)	10,991										
Under 65 years	11,201	11,201									
65 years and over	10,326	10,326									
Two people	14,051										
Householder under 65 years	14,489	14,417	14,840								
Householder 65 years and over	13,030	13,014	14,784								
Three people	17,163	16,841	17,330	17,346							
Four people	22,025	22,207	22,570	21,834	21,910						
Five people	26,049	26,781	27,170	26,338	25,694	25,301					
Six people	29,456	30,803	30,925	30,288	29,677	28,769	28,230				
Seven people	33,529	35,442	35,664	34,901	34,369	33,379	32,223	30,955			
Eight people	37,220	39,640	39,990	39,270	38,639	37,744	36,608	35,426	35,125		
Nine people or more	44,346	47,684	47,915	47,278	46,743	45,864	44,656	43,563	43,292	41,624	

Source: U.S. Census Bureau. (2012, September 12). *Poverty thresholds 2008*. Retrieved from <https://www.census.gov/hhes/www/poverty/data/threshld/thresh08.html>

Neighborhood Health Clinic Collier County Community Profile 2016

Table 27 Poverty Thresholds for 2009

Size of family unit	Weighted average thresholds	Related children under 18 years								Eight or more	
		None	One	Two	Three	Four	Five	Six	Seven		
One person (unrelated individual)	10,956										
Under 65 years	11,161	11,161									
65 years and over	10,289	10,289									
Two people	13,991										
Householder under 65 years	14,439	14,366	14,787								
Householder 65 years and over	12,982	12,968	14,731								
Three people	17,098	16,781	17,268	17,285							
Four people	21,954	22,128	22,490	21,756	21,832						
Five people	25,991	26,686	27,074	26,245	25,603	25,211					
Six people	29,405	30,693	30,815	30,180	29,571	28,666	28,130				
Seven people	33,372	35,316	35,537	34,777	34,247	33,260	32,108	30,845			
Eight people	37,252	39,498	39,847	39,130	38,501	37,610	36,478	35,300	35,000		
Nine people or more	44,366	47,514	47,744	47,109	46,576	45,701	44,497	43,408	43,138	41,476	

Source: U.S. Census Bureau. (2012, September 12). *Poverty thresholds for 2009 by size of family and number of related children under 18 years*. Retrieved from <https://www.census.gov/hhes/www/poverty/data/threshld/thresh09.html>

Neighborhood Health Clinic Collier County Community Profile 2016

Table 28 Poverty Thresholds for 2010

Size of family unit	Weighted average thresholds	Related children under 18 years								
		None	One	Two	Three	Four	Five	Six	Seven	Eight or more
One person (unrelated individual)	11,139									
Under 65 years	11,344	11,344								
65 years and over	10,458	10,458								
Two people	14,218									
Householder under 65 years	14,676	14,602	15,030							
Householder 65 years and over	13,194	13,180	14,973							
Three people	17,374	17,057	17,552	17,568						
Four people	22,314	22,491	22,859	22,113	22,190					
Five people	26,439	27,123	27,518	26,675	26,023	25,625				
Six people	29,897	31,197	31,320	30,675	30,056	29,137	28,591			
Seven people	34,009	35,896	36,120	35,347	34,809	33,805	32,635	31,351		
Eight people	37,934	40,146	40,501	39,772	39,133	38,227	37,076	35,879	35,575	
Nine people or more	45,220	48,293	48,527	47,882	47,340	46,451	45,227	44,120	43,845	42,156

Source: U.S. Census Bureau. (2010). *Poverty thresholds for 2010 by size of family and number of related children under 18 years* [Data file]. Retrieved from <https://www.census.gov/hhes/www/poverty/data/threshld/index.html>

Neighborhood Health Clinic Collier County Community Profile 2016

Table 29 Poverty Thresholds for 2011

Size of family unit	Weighted average thresholds	Related children under 18 years								
		None	One	Two	Three	Four	Five	Six	Seven	Eight or more
One person (unrelated individual)	11,484									
Under 65 years	11,702	11,702								
65 years and over	10,788	10,788								
Two people	14,657									
Householder under 65 years	15,139	15,063	15,504							
Householder 65 years and over	13,609	13,596	15,446							
Three people	17,916	17,595	18,106	18,123						
Four people	23,021	23,201	23,581	22,811	22,891					
Five people	27,251	27,979	28,386	27,517	26,844	26,434				
Six people	30,847	32,181	32,309	31,643	31,005	30,056	29,494			
Seven people	35,085	37,029	37,260	36,463	35,907	34,872	33,665	32,340		
Eight people	39,064	41,414	41,779	41,027	40,368	39,433	38,247	37,011	36,697	
Nine people or more	46,572	49,818	50,059	49,393	48,835	47,917	46,654	45,512	45,229	43,487

Source: U.S. Census Bureau. (2011). *Poverty thresholds for 2011 by size of family and number of related children under 18 years* [Data file]. Retrieved from <http://www.census.gov/hhes/www/poverty/data/threshld/index.html>

Neighborhood Health Clinic Collier County Community Profile 2016

Table 30 Poverty Thresholds for 2012

Size of family unit	Weighted average thresholds	Related children under 18 years								
		None	One	Two	Three	Four	Five	Six	Seven	Eight or more
One person (unrelated individual)	11,720									
Under 65 years	11,945	11,945								
65 years and over	11,011	11,011								
Two people	14,937									
Householder under 65 years	15,450	15,374	15,825							
Householder 65 years and over	13,892	13,878	15,765							
Three people	18,284	17,959	18,480	18,498						
Four people	23,492	23,681	24,069	23,283	23,364					
Five people	27,827	28,558	28,974	28,087	27,400	26,981				
Six people	31,471	32,847	32,978	32,298	31,647	30,678	30,104			
Seven people	35,473	37,795	38,031	37,217	36,651	35,594	34,362	33,009		
Eight people	39,688	42,271	42,644	41,876	41,204	40,249	39,038	37,777	37,457	
Nine people or more	47,297	50,849	51,095	50,416	49,845	48,908	47,620	46,454	46,165	44,387

Source: U.S. Census Bureau. (2012). *Poverty thresholds for 2012 by size of family and number of related children under 18 years* [Data file]. Retrieved from <https://www.census.gov/hhes/www/poverty/data/threshld/index.html>

Neighborhood Health Clinic Collier County Community Profile 2016

Table 31 Poverty Thresholds for 2013

Size of family unit	Weighted average thresholds	Related children under 18 years								Eight or more
		None	One	Two	Three	Four	Five	Six	Seven	
One person (unrelated individual)	11,888									
Under 65 years	12,119	12,119								
65 years and over	11,173	11,173								
Two people	15,142									
Householder under 65 years	15,679	15,600	16,057							
Householder 65 years and over	14,095	14,081	15,996							
Three people	18,552	18,222	18,751	18,769						
Four people	23,834	24,028	24,421	23,624	23,707					
Five people	28,265	28,977	29,398	28,498	27,801	27,376				
Six people	31,925	33,329	33,461	32,771	32,110	31,128	30,545			
Seven people	36,384	38,349	38,588	37,763	37,187	36,115	34,865	33,493		
Eight people	40,484	42,890	43,269	42,490	41,807	40,839	39,610	38,331	38,006	
Nine people or more	48,065	51,594	51,844	51,154	50,575	49,625	48,317	47,134	46,842	45,037

Source: U.S. Census Bureau. (2013). *Poverty thresholds for 2013 by size of family and number of related children under 18 years* [Data file]. Retrieved from <https://www.census.gov/hhes/www/poverty/data/threshld/index.html>

Neighborhood Health Clinic Collier County Community Profile 2016

Table 32 Poverty Thresholds for 2014

Size of family unit	Weighted average thresholds	Related children under 18 years								Eight or more
		None	One	Two	Three	Four	Five	Six	Seven	
One person (unrelated individual)	12,071									
Under 65 years	12,316	12,316								
65 years and over	11,354	11,354								
Two people	15,379									
Householder under 65 years	15,934	15,853	16,317							
Householder 65 years and over	14,326	14,309	16,256							
Three people	18,850	18,518	19,055	19,073						
Four people	24,230	24,418	24,817	24,008	24,091					
Five people	28,695	29,447	29,875	28,960	28,252	27,820				
Six people	32,473	33,869	34,004	33,303	32,631	31,633	31,041			
Seven people	36,927	38,971	39,214	38,375	37,791	36,701	35,431	34,036		
Eight people	40,968	43,586	43,970	43,179	42,485	41,501	40,252	38,953	38,622	
Nine people or more	49,021	52,430	52,685	51,984	51,396	50,430	49,101	47,899	47,601	45,768

Source: U.S. Census Bureau. (2014). *Poverty thresholds for 2014 by size of family and number of related children under 18 years* [Data file]. Retrieved from <https://www.census.gov/hhes/www/poverty/data/threshld/index.html>

Neighborhood Health Clinic Collier County Community Profile 2016

Table 33 Poverty Thresholds for 2015

Size of family unit	Related children under 18 years								
	None	One	Two	Three	Four	Five	Six	Seven	Eight or more
One person (unrelated individual)									
Under 65 years	12,331								
65 years and over	11,367								
Two people									
Householder under 65 years	15,871	16,337							
Householder 65 years and over	14,326	16,275							
Three people	18,540	19,078	19,096						
Four people	24,447	24,847	24,036	24,120					
Five people	29,482	29,911	28,995	28,286	27,853				
Six people	33,909	34,044	33,342	32,670	31,670	31,078			
Seven people	39,017	39,260	38,421	37,835	36,745	35,473	34,077		
Eight people	43,637	44,023	43,230	42,536	41,551	40,300	38,999	38,668	
Nine people or more	52,493	52,747	52,046	51,457	50,490	49,159	47,956	47,658	45,822

Source: U.S. Census Bureau. (2015). *Poverty thresholds for 2014 by size of family and number of related children under 18 years* [Data file]. Retrieved from <https://www.census.gov/hhes/www/poverty/data/threshld/index.html>